



ANNUAL
REVIEW
2015

Inspiring local giving

Inspiring local giving

“ QCF is like a broker, able to bring together those small community charities without fundraising skills and donors with funds. The donors receive support and learning experiences through the activities of QCF. A win-win situation!”

Andrew Fletcher OBE, Fund holder

01



INTRODUCTION

- 4 Chair of Trustees
- 6 CEO report

02



PHILANTHROPY ADVICE

- 8 Philanthropy advice service
- 10 Individuals and families
- 12 Charitable Trusts
- 14 Professional Advisors
- 16 Companies and organisations
- 20 List of Funds
- 25 Leaving a legacy
- 36 Quay Environment Fund
- 37 Getting involved

03



GRANT MAKING

- 26 Grant making introduction
- 28 Beneficiary group stories
- 35 Making an impact

04



OUR PEOPLE

- 38 Patrons
- 39 Staff
- 40 Trustees
- 42 Our supporters
- 44 Thank you

05



FINANCIALS & SPONSORS

- 46 Financials
- 50 Sponsors
- (back) Get in contact

ANNUAL
REVIEW

2015

Front cover – clockwise: Avon Wildlife Trust, Travelling Light Theatre Company, Bristol Drugs Project, Engine Shed
 Contents page – left to right: St Pauls Carnival, Southside, Hartcliffe and Withywood Angling Club, Horfield and District Allotment Association, EACH
 Back cover: Horfield and District Allotment Association



Introduction

We continue to work with our community to fulfil our vision:
 “To enrich local lives, connect people and build stronger communities”



Robert Bourns DL
Chair

“Welcome to our Annual Review for the year ended March 2015. We continue to work against a difficult economic background locally and nationally and I am therefore delighted to report on a successful year for Quartet Community Foundation. Through the generosity of our donors we have been able to provide grant funding to nearly 1,000 organisations and charities working locally to support and empower those most in need in our community”

This year we saw the end of the Community First Challenge where we were able to match locally raised endowed funds with government money at a rate of 50p in every pound. Across the life of the Community First Challenge we have raised £4.67 million in new endowed funds. This money will be held by QCF to provide funding to meet changing needs in perpetuity.

“ We work to strengthen QCF and hope that more people will see the benefit of establishing a fund so that they, like our existing 239 fund holders, will work with QCF to meet the needs in the community. ”

Robert Bourns DL, Chair

We continued to build our portfolio of Social Needs Reports adding a report on older people, and another on younger people in the the four unitary authorities we serve. These reports are available to all and provide a real insight into local need and help us to work with our donors to target their giving in the most effective and strategic way.

News in recent months questioning governance in some charities and methods used to obtain donations remind us of the importance of QCF’s role and value. Armed with local knowledge and expertise on need and grant making processes in place to ensure due diligence, so that money is used for the purposes intended.

Despite all this we are conscious that the demand for funding to help those most in need continues to grow. We work to strengthen QCF and hope that more people will see the benefit of establishing a fund

so that they, like our existing 239 fund holders, will work with QCF to meet the needs in the community.

Finally a number of thank yous. Firstly to my predecessor Stephen Parsons MBE DL for his excellent stewardship during his four years as Chair. It has been a real privilege to take over the role of Chair at QCF, an organisation I have had a long association with as a fund holder with TLT. I also thank Caroline Duckworth DL for her excellent leadership of the organisation during the last three and a half years. She is well known by all associated with QCF and has a real passion for the work of the organisation. Alice Meason and Maria Dunn both left QCF after 27 years and 9 years respectively. I thank them both for their service and commitment to our work.

I am delighted to welcome Sue Turner as CEO of QCF, in succession to Caroline. Sue was very obviously the best in

a strong pack of candidates. Sue has worked closely with QCF in recent years through her role as Communications Director with Bristol Port which has a fund with QCF.

Thank you also to my fellow trustees, committee members and Ambassadors for their hard work on behalf of QCF and to our President and Vice Presidents who are always available with words of advice to help advance QCF and of course to all fund holders and others who have supported our work over the last year.

CEO report



Ujima Radio



Caroline Duckworth DL

Caroline Duckworth DL
CEO (2012 – 2015)

Over the last three and half years as CEO of Quartet Community Foundation I have had the real pleasure of meeting so many generous people in our community who want to help those in need locally either by donating through QCF or by running vital charities and organisations.

We are fortunate to live in a beautiful area which is economically strong but I know for many in our community life is too hard, particularly those who are vulnerable and at disadvantage. To me it is a shocking statistic that whilst 83.1% of charities are described as small or micro they only receive 5.3% of charitable income raised. At a time of real difficulty and austerity it is even more important that local organisations can access their fair share of funding.

“To me it is a shocking statistic that whilst 83.1% of charities are described as small or micro they only receive 5.3% of charitable income raised.”

Caroline Duckworth DL
CEO (2012 – 2015)

On behalf of our donors, our role is to help support these local organisations and charities who may not have fundraising departments or even any paid staff to get the financial support they need. Sometimes we are asked about the value and impact of small grants. The answer is that it's huge, whether as a catalyst for bigger funding (see p 35) or to deliver a much needed activity or project (see p 28-34). QCF is often described as “the best kept secret” so please help us to dispel the myth by telling more people about QCF.

Giving through QCF is easy, tax efficient and a great way to support local projects.

We welcome donations of all sizes and we will tailor our support accordingly but always with a view to supporting donors to give locally.

There are several ways to work with us:

- Create an endowed fund where donations will be invested and the interest used to make grants. This allows money to go on giving in perpetuity to those most at disadvantage and in need
- Create a revenue fund where QCF will provide guidance on how to target donations now to have the greatest impact
- Make a donation (one off or regular) to general funds to allow QCF to make discretionary grants
- Leave a legacy to be used through QCF to support causes that matter

Thank you to everyone who has supported me and QCF during my time as CEO. A special thanks to Alice Meason (Grants Director) who has left to live in France and to Maria Dunn (Donor Services Officer) who has gone on to pursue a new career.

Both made a huge impact through their commitment, enthusiasm and passion for the work of QCF.

It has been a real privilege to lead the team here at QCF and I am delighted that Sue Turner has joined as CEO to take the organisation through the next exciting stage.



“I am thrilled and honoured to have the opportunity to lead QCF.

From the time that I first started work locally I have admired QCFs many achievements, not least the dedication of its staff, Trustees and supporters. I am committed to building on the great work that QCF has achieved to date.”

Sue Turner
CEO (from October 2015)

Our philanthropy advice service

£23.9

million in endowed funds held on behalf of donors

£4.9

million received in donations from individuals, companies, charitable trusts and statutory bodies

6 new endowed funds

5 new revenue funds

Individuals, families, businesses and charitable trusts give through QCF to help local people, communities and causes. Our purpose is "Inspiring local giving" and the following pages tell the stories of some of those who are already gaining the enjoyment and reward of giving back to their communities through us.

In the course of this year we have worked with a number of new fund holders to help them develop a plan for their giving. On their behalf we have explored issues such as young people leaving care, educational under-attainment in South Bristol, older people's needs in Weston-super-Mare and many more.

Through a series of project visits, discussions and background research on needs we have supported these fund holders to make informed decisions about their giving, secure in the knowledge that they are meeting real local needs.

The majority of our new funds are the result of an introduction from a trusted intermediary – a trustee, professional advisor, an existing fund holder or a QCF Ambassador – so our thanks go to all those who promote what we do.

Please contact us if you would like us to discuss how we can help you develop your giving strategy.

64

fund holders made significant additions to their funds in the course of the year and we would like to thank them for continuing to trust us as a vehicle for their charitable giving.

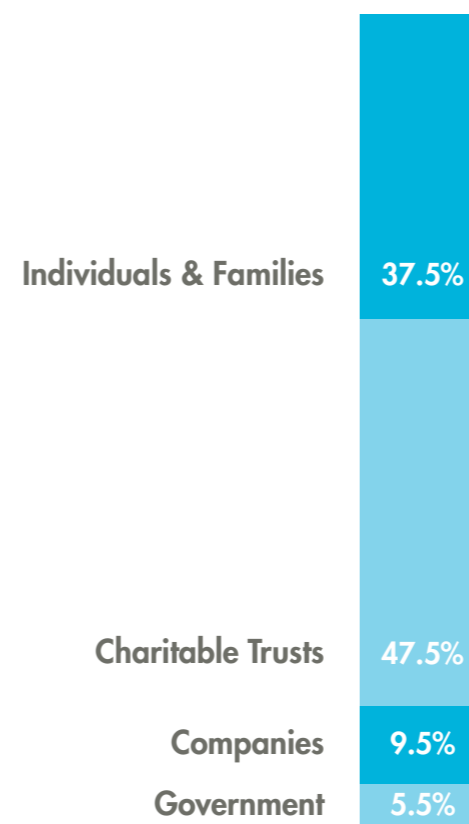
239

funds under QCF management. These now comprise 194 endowment funds, of which 15 are building to endowment funds worth £15,000 or more, and 45 revenue funds.



Alice Meason (outgoing Grants Director) and Joan Hawkins (Fund holder)

Donors by sector



“Thank you for coming to my house this afternoon and for a very valuable meeting. Your experience and advice helped me today as so often in the past – and no doubt in the future too.”

Jerry Cowhig MBE, Fund holder

Helping individuals and families

Family philanthropy does not have to mean setting up a whole new charitable trust and the range of fund types at Quartet Community Foundation gives flexibility for people with families to try out different ways of giving.

“Working with 1625 Independent People has been an incredibly humbling, rewarding and fulfilling experience,” said Toby Dove, a student who is a volunteer mentor with the organisation.

1625 provide young people leaving care or who have been homeless with positive relationships and help them to “reboot their lives”.

The two-way benefit has been obvious to Toby: “Feeling partly responsible for increasing the quality of life of someone from incredibly difficult circumstances is one of the best things I’ve done. My confidence and ability to speak in front of groups of people has

grown. I began the project as rather a timid individual, however, now I manage and organise people and tasks with relative ease.”

And it was 1625’s Community Mentoring Project – which benefits both young care leavers and their mentors – that attracted Jo and Nigel Turner, fund holders with QCF, to part-fund the project.

“I worked in the care system and saw how difficult it was for young people leaving care to take the next steps in education, employment or in their lives more generally” said Jo Turner. “My husband and I are in the position to be able to help financially and, having been introduced

to QCF by our financial advisor, we decided to work with QCF to explore how best we might direct our funding to reach these vulnerable young people.

QCF has arranged for us to visit a number of great local projects, helped us to develop a plan for our giving that meets our interests and gave us the opportunity to meet a community of local philanthropists that are taking a similar approach to their giving.”

If you’d like to set up a fund, please contact Ronnie Brown ronnie.brown@quartetcf.org.uk



Photo: Nigel and Jo Turner meet Denise and Toby, Community Mentors, to hear first hand how their fund with QCF has been used to support young people leaving care.

“We have been really pleased with the support we have had from QCF, allowing us to reach organisations like 1625 and support the fantastic work they do. It has been inspiring to meet Toby and the rest of the team and we hope to continue our support for young people leaving care through them. **”**

Jo Turner (Fund holder)

Informing strategic giving: The Medlock Fund for Older People

Philanthropists work with QCF because of our track record in supporting local projects, our expertise in community and our ability to identify particular areas of need

Betty Long, 83, is a passionate pianist and music lover, and has been a carer most of her life. Before her husband Cliff had a stroke more than 25 years ago, Betty cared for her mother.

“It’s very hard,” says Betty. “Sometimes I feel guilty that I’m not doing enough.” Cliff’s stroke left him unable to speak, so he and Betty sometimes struggle to communicate.

The Carers’ Centre, Bath and North East Somerset (B&NES) was awarded £3,000 from the Medlock Fund for Older People towards providing over 120 older carers like Betty with a break from their caring role. The outcomes showed that 100% of older carers rated an increase in their health and wellbeing after an activity, 90% taking part said they felt more in touch with people by attending a break, and 94% felt they had learnt a new skill.



We recently produced a social needs report on older people in the West of England. There are over 172,000 people aged over 65 years living locally and improvements in life expectancy mean that people aged 85 and over are the fastest-growing age group.

The study shows the needs older people face, which include rural deprivation (in isolated villages), fuel poverty (resulting in increased number of winter deaths) and health issues (including the increasing number of those

suffering dementia). These are just a few needs currently being addressed by QCF, through The Medlock Fund for Older People. By working with our donor, David Medlock, the Fund has awarded 36 grants helping over 10,000 older people in our area of benefit.

We are committed to working with donors to identify unmet needs where philanthropy can make a difference.

If you are keen to explore how we can help you to help those in need locally please contact ronnie.brown@quartetcf.org.uk

Supporting Charitable Trusts: The Bridging Fund

Social Needs Reports produced by QCF are an important source of knowledge to help people to target their giving strategically

The Bridging Fund was originally set up to support people in crisis. Social Needs Reports developed by QCF had identified domestic abuse as a significant issue in Bath & North East Somerset (B&NES) and The Bridging Fund wanted to use their funds for this issue. With QCF’s knowledge and expertise they were able to target their support to Somerset and Avon Rape and Sexual Abuse Support (SARSAS) with a grant of £7,000.

Rowan Miller, Director at SARSAS, commented “Receiving the grant has allowed us to offer a vital helpline and e-mail support service to men and boys living in B&NES, where previously there was nothing. This is a highly sensitive issue and training professionals as sexual violence support champions will enable many more people to safely disclose rape, sexual assault and sexual abuse and receive the vital support they need in

B&NES. Thanks QCF for really helping to make a difference.”

Offering advice and guidance on local need is a vital service QCF provides. This intelligence enables donors and potential donors to be more aware of the key issues in their local community and target their funds most effectively to help address those needs.

Social Needs Reports are available for each of the four areas across the West of England as well as more in depth reports for older and younger people.

If you would like to learn more about social needs in your local area, please contact ronnie.brown@quartetcf.org or [Jilly Edwards](mailto:jilly.edwards@quartetcf.org.uk)

“Thanks to the expert knowledge from QCF, we have learnt a great deal about local need and as a result we have been able to target our funds to a priority issue, domestic abuse. We would never have been able to do this without QCF’s guidance”

**Mike Richardson,
The Bridging Fund**



Mike Richardson and Rowan Miller

Working with Professional Advisors

QCF provides an effective way for charitable trusts to continue to meet their long term aims without the administrative burden

Ben Durston lived in Henbury all his life and was involved in many local charities and community organisations, including Henbury Village Hall. In his will, he left the bulk of his estate in a charitable trust and appointed partners at Meade King as his initial trustees.

Geoff Gollop and Richard Boulding, trustees of the Ben Durston Charitable Trust wanted to keep some of the Fund as a permanent endowment, but without the administrative burden. Their solicitor, Vanessa Eyre at Meade King said "In discussions with the trustees about what they hoped to achieve, Quartet Community Foundation struck me as the perfect vehicle to realise the trustees' wishes".

Trustee Richard Boulding continues, "As trustees, Geoff and I decided to make some significant grants to charities and organisations Ben had supported during his life and in his will, but we also felt that part of the trust fund should continue to support local charities in years to come and that Ben's contribution should continue to be recognised. We were delighted that QCF were able to fill this role and the Fund is the legacy Ben left to support charitable and community organisations in the long term."

Vanessa acted for the trustees, agreeing the terms of the Fund and grants awarded from it.

As part of the philanthropy service we offer, charitable trusts are able to transfer the capital to QCF and the income is applied according to the settlor's original wishes.

We handle all the administration, paperwork and investment management, enabling the work of the original benefactor to live on in the local community as a lasting legacy.

We are happy to discuss how we can help with trust transfers.

For more information please contact ronnie.brown@quartetcf.org.uk



Richard Boulding and Vanessa Eyre



“We have built up a charitable fund over eleven years working with QCF. Their expertise helps us to identify and support a whole range of local projects reaching those most in need.”
Becky Ricards Small,
Partner, Withy King

Assisting Corporate Giving

Businesses in our area are making an important contribution to the lives of local people through funds at Quartet Community Foundation and are demonstrating significant leadership in corporate philanthropy and social responsibility.

Like many companies, Withy King was finding it difficult to develop a charitable giving policy in response to the numerous requests for donations from charities they received every day.

In discussion with QCF about the impact the company wanted to have locally, Withy King set up an endowment fund with us and has been regularly adding to it with donations from the partners. Using our local knowledge and Social Needs Reports to inform its giving, Withy King has been able to make strategic grants from the Fund, ensuring that those most in need in the community where their staff live and work have been helped.

A recent grant from Withy King enabled local charity Mentoring Plus, which works with young people who are socially isolated, vulnerable and disadvantaged, to update their IT infrastructure. This has had a significant impact on how the charity operates, streamlining activity and creating more time to support young people.

Connecting companies and organisations to the communities in which they operate and their staff live is one of the philanthropy services we offer. QCF can help guide staff to make a lasting impact at a grassroots level by identifying the very best projects to support. This provides companies

with a simple, cost-effective and strategic way of giving.

No matter the size of the company we can help make your corporate philanthropy more effective.

For more information please contact ronnie.brown@quartetcf.org.uk or jilly.edwards@quartetcf.org.uk

“Over the past ten years, QCF has helped Mentoring Plus in many different ways. They offer sound advocacy, advice, encouragement and funding. During challenging times their funding has helped us survive.”

Jamie Luck, Mentoring Plus



Engine Shed agreed to raise £500 (a monkey) in 2015

Making local giving easy for all



Giveamonkeys at EngineShed

“ Engine Shed is an incubator for new innovative local businesses so supporting local charities is just part of helping to make this area a great place to live and work. We jumped at the chance to support the Year of 100 Monkeys as it is the solution to us for our local giving. ”

Nick Sturge, Director of Engine Shed, explained why they got involved: “We have agreed to raise £500 (a Monkey!) over the course of 2015 which will be used to support local charities.

It’s a fun, innovative brand and a novel and collaborative concept which fits perfectly with our working ethos and it has all the quality assurance that comes from Quartet Community Foundation. So we know that all the money raised will be used through QCF to support local charities that really need support and are helping those most in need.

There were four themes we could choose from:

Inspiring

These are the charities which give everyone the chance to follow their dreams.

Changing

Here charities are focussing on those in need of a fresh start.

Caring

For those supporting people when they need a helping hand.

Sustaining

Working to protect the vulnerable in our community.

We would have loved to support them all but we chose the inspiring fund because it connected with us most. We’re having fun raising the money too! The last Friday of each month is “FUNDRaise a glass” where we get everyone together to share what’s going on, anyone who wants get a minute to pitch their business idea to the others and get some friendly challenge on it. After the business is done we network over a beer (or a non-alcoholic equivalent) but all the money raised goes towards our Monkey.

Why not join us and pledge a Monkey this year to support great local causes? Visit giveamonkeys.co.uk

Fund holders

Endowment funds

Building an independent source of long term support for our local communities is at the heart of our work. This vision is shared by our endowment fund holders, listed on the following pages, many of whom continue to add to their Funds as and when the time is right for them.

£750,000 and above	Anonymous Community First Fund Arnos Vale Cemetery Fund Bristol & West '97 Fund	Eversea Community First Fund Young Bristol Challenge Fund
£500,000 - £749,999	Biddle Trust Fund John Pontin Trust	Stoke Park Group Friends' Fund
£250,000 - £499,999	Anonymous Community First Fund AXA Fund Bristol Port Company Fund J & M Britton Charitable Trust Churngold Environment Fund Easton & Lawrence Hill Neighbourhood Management Fund	Joan Hawkins Fund Lloyd Robinson Family Fund Needham Cooper Charitable Trust Betty & Miles Parsons Grassroots Fund Rolls-Royce Fund Society of Merchant Venturers Fund
£100,000 - £249,000	Anderson Fund Bath Half Marathon Fund Ben Durston Community First Fund John Bretten Grassroots Memorial Fund Bridging Fund Community First Fund Bristol & West Endowment Fund	Bristol Association for the Care & Resettlement of Offenders Bristol Community & Voluntary Sector Fund Bristol Bordeaux Community First Fund Cowslip Green Fund Harry Crook Foundation

Denman Charitable Trust Fund Fittleworth Grassroots Fund Walter Hawkins Fund Hewlett Packard Bristol Fund Jerry Cowhig Community First Fund John Laing Fund Kitale Community First Fund Laycock Family Grassroots Fund Learning & Skills Council West of England Fund McGreevy Fund Medlock Charitable Trust Community First Fund	Mercers Company Fund Mr and Mrs Richard Johnson Fund Osborne Clarke Endowment Fund Rotary Club of Weston-super-Mare (including Claude Champion Fund) Sherwood Family Fund John Spielman Fund University of the West of England Vice Chancellor's Fund Upper Horfield Neighbourhood Grassroots Fund Wilde Family Fund
---	--

£50,000 - £99,999	Ambassadors Fund Bristol Anonymous Fund Ansty Fund R W Barnes Bursary Fund Bellevue Community First Fund Bridge Foundation Fund Anthony & Gabrielle Brown Fund Basil Brown Fund Clerical Medical Investment Group Fund Florence Denning Fund Durie Family Fund Andrew Fletcher Grassroots Fund KPMG Fund Mark Hudson Community First Fund JP Morgan Fund for Education Nisbets Fund	Sheila Pollard Grassroots Fund Pople Charitable Trust E S & A Robinson Family Fund Rose Bowl Fund Verdon-Smith Family Charitable Trust St Mary's Tyndalls Park Trust Fund Julian & Lindsay Telling Fund Tidmarsh Fund TLT Solicitors Fund University of the West of England Endowment Fund Wards Solicitors Fund Sir John Wills Charitable Trust Fund for Young People Western Power Distribution Community Fund Youngwood Fund
-------------------	--	---

£25,000 - £49,999

25th Anniversary Fund	Exploratory Fund
Anonymous Fund	Future Publishing Fund
Arden Fund	Harpree Fund
Armeno Fund	High Sheriff's Fund
Bramble Fund	Johnstone Family Fund
Bristol Airport Grassroots Fund	Lee Family Fund
Bristol City Council Community Safety & Environmental Fund	Geoff & Jackie Matthews Fund
Bristol Water Fund	Mosaic Management Consultancy Fund
Bristol Young Professionals Fund	Moss Family Fund
Burke Family Fund	North Somerset Fund
Business West Endowment Fund	Pamela's Grassroots Fund
Chairman's Fund	Redcliffe Homes Fund
Chantry Fund	Peter Rilett Fund
Dr Catherine Chapman, née Chambers Fund	Tim & Liz Ross Fund
Clarke Willmott Grassroots Fund	Sharp Family Fund
Bob Clements Education Grassroots Fund	Steel Charitable Trust
Courage Brewery Fund	Tim Stevenson Fund
Cullum Family Fund	Diane & Murray Stewart Fund
Dixon Family Fund	Stride Treglown Fund
Ebb Fund	Top Birds Fund
Elizabeth Shaw Fund	Unilever HPC Export Fund
	Withy King Endowment Fund
	Zair Family Fund

Colston's Girls' School Fund	Pattersons Fund
Corixa Fund	Pendlebury/Tucker Community First Fund
Cryfield Community First Fund	Richardson Swift Grassroots Fund
J R Dunn Fund	Rushmoor Grassroots Fund
Farleigh Plain Community First Fund	Saffery Champness Fund
Roger Guck Bursary Fund	The Serchio Fund
Harveys of Bristol Fund	Jennifer Skellett Fund
Alfred Hill Fund	Mary Smallwood Grassroots Fund
Housing & Homelessness Community Fund	Matthew Smallwood Grassroots Fund
Hughes Family Fund	Paul & Amanda Smallwood Grassroots Fund
Idris Community First Fund	Alan Stevenson Family Fund
Kaye Family Grassroots Fund	Stobart Family Fund
Lalonde Fund	Storvik Family Fund
Lions of Bath Grassroots Fund	Talking Your Language Fund
Marble Mosaic Fund	Andrew Thornhill Fund
Mayor's Fund for Bristol	Tips & Wrinkles Fund
McArthur Fund	Stephen & Sally Trinder Grassroots Fund
Michael Lutley Fund	Whitewood Family Fund
Mulberry Community First Fund	Zetor Fund
Neal Family Fund	
David & Julia Norton Fund	

up to £25,000

Aird Family Community First Fund	Roger & Affra Baird Fund
Allied Domecq Fund	Charles Barcroft Fund
Andrew Addicott Community First Fund	Bragg Family Fund
Aviva Fund	Bristol Junior Chamber of Commerce Fund
Awdry Fund	Business Women West Fund
AWW Fund	Cadbury Fund
	Claisse Family Fund

Building to a Named Fund
up to £15,000

Alastair Sawday Publishing Grassroots Fund	Foster Family Community First Fund
Ambassadors Grassroots Fund	Freedom Community First Fund
Bath & North East Somerset	Hemming Family Community First Fund
Anonymous Fund	Helen Moss Grassroots Fund
Bath & North East Somerset Fund	Tolchard Family Fund
BDO LLP Fund	Wesport Grassroots Legacy Fund
Corrigan Associates Fund	Willin Community First Fund
Sue & John Cottrell Fund	Yates Family Charitable Fund

Revenue funds

We are committed to helping to meet immediate needs and this is particularly relevant at a difficult time for many local communities. This is recognised by our revenue fund holders, listed below, many of whom make regular annual donations through Quartet Community Foundation to reach the local causes they care about.

over £100,000	Bristol 2015 Small Grants Fund Fredricks Foundation Fund Gannett Foundation Fund	Henry Smith Charitable Trust Charity Osborne Clarke Charitable Fund Spirit Of 2012
£50,000 - £99,999	Sport/Comic Relief Fund	Sport Relief Community Cash
£20,000 - £49,999	Avon Ambulance Staff Benevolent Fund B&NES Healthy Lives, Healthy People Fund Bath & West Community Energy Fund B&NES Supporting Communities Fund R W Barnes Comic Relief - Local Communities Fund	High Sheriff's Fund Needham Cooper Charitable Trust North Somerset Council Fund for Children & Young People Raj K Soni Legacy Fund South Gloucestershire Positive Activities Fund Surviving Winter Appeal
up to £20,000	Aird Family Revenue Fund Ambassadors Fund B&NES Anonymous Fund Bath Half Marathon Fund Bristol City Council Community Investment Small Grants Fund Bristol Mayor's Fund Burgess Salmon Charitable Trust Fund Clifton College Fund Coastal Marine Trust Fund Community Games Fund Community Planning Fund Frances Goodchild Foundation	Giveamonkeys Hollingdale Fund HSWJ Fund Institute of Directors (Bristol) Fund IOP Publishing Fund The Mall's Fountain Charity Fund Mark Hudson Fund Santander Social Enterprise Development Fund Somerset Valley Partnership Fund St James Trust The Funding Network Bristol University of Bristol RAG Fund Veale Wasbrough Vizards Fund

Leaving a legacy

Helping people in your community for generations to come

Three people have chosen to leave legacies this year to create a lasting gift to their local community:

Maria Anna Pierina Adams – to help Stoke Park Group Friends' Fund

Dina Cannell – to address homelessness

Vera Hayes – to Bristol Mayor's Fund

Leaving a legacy is one way of helping people in your own community for generations to come – leaving something of real and lasting value.

However knowing which charities and groups need your support can be difficult. This is where QCF can help you in a simple and efficient way, ensuring your legacy supports those causes you care about most for years to come. All legacy gifts are invested and only the income is used to make grants year after year. Your gift will, therefore, keep on giving as it remains as a permanent pot of money at QCF.

You could decide to create your own charitable fund to support causes that mean the most to you. This option allows your family or close friends to have an input on how the funds are distributed too.

If you already have a fund with QCF then any legacy donations can be added to your existing fund.

If you do decide to leave a legacy in the name of QCF please do let us know.

Please contact us for further information on how we can help you. Legacy and Memorial Funds both offer a very tax efficient and administratively simple way of giving.

Memorial Funds

We can help you set up a Memorial Fund in commemoration of a loved one, providing family and friends with a personal focus for special memories. This type of fund can be set up quickly, in just a matter of days, and you can raise funds and collect donations for depositing and holding in the fund.

Please contact Jilly Edwards jilly.edwards@quartetcf.org.uk for further information on how we can help you.

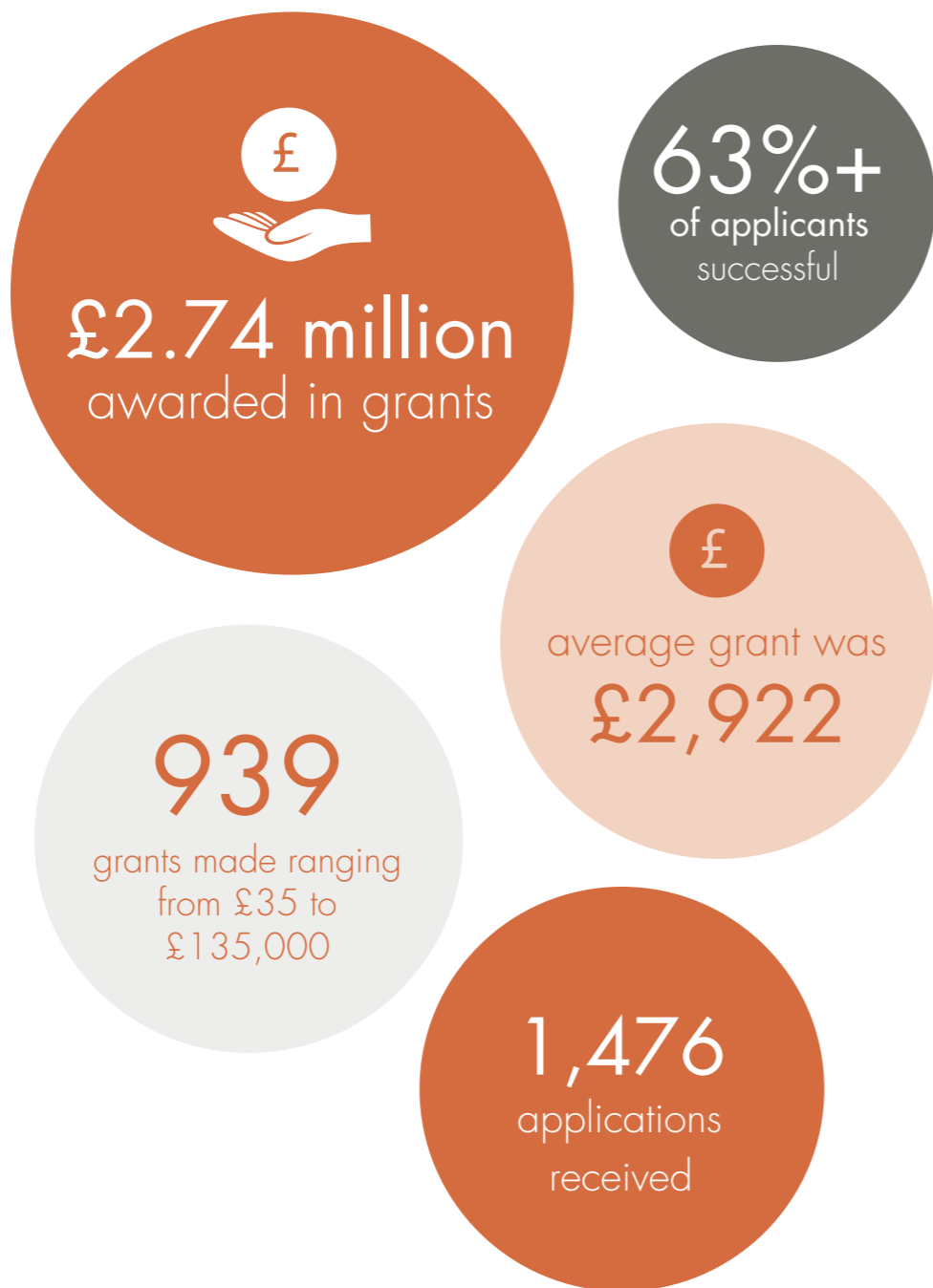
Grant making

On behalf of our fund holders we continue to respond to needs in our local community in a flexible and timely way.

We continue to develop our knowledge and understanding of local need to guide our donors and shape our grant making strategy.

For the second year running we ran a "Step Change" programme – making larger grants totalling £95,735 to 11 organisations to support them to make practical, long-term changes to the way in which they deliver their services.

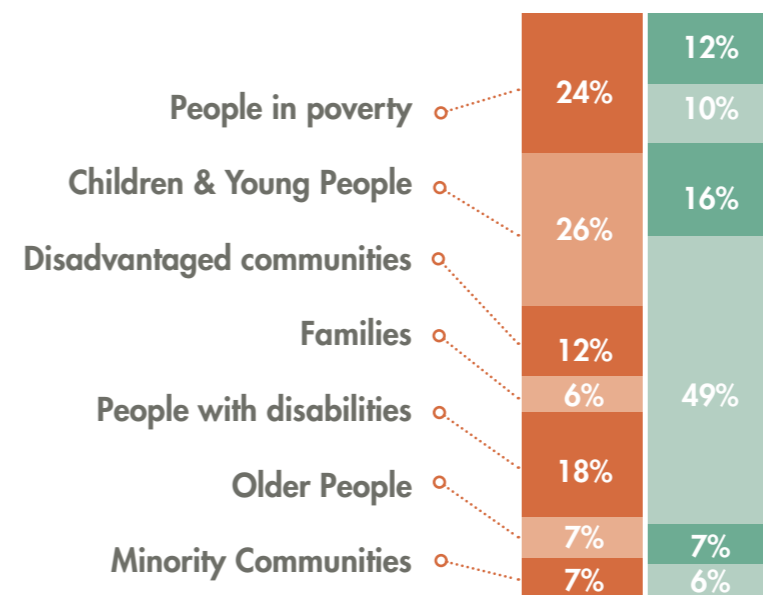
We monitor all grants made through our different grants programmes to ensure that funding is being used as intended, to assess the impact of the grants and to report back to the fund holders who made the grants from their funds. We review the information we receive from these reports, alongside the social needs work we have undertaken this year, in order to inform both our future grant making policies and our conversations with fund holders.



Hartcliffe and Withywood Angling Club

The information below summarises some of the key features of the grants made this year in relation to grant sizes, beneficiaries and impact.

Beneficiaries



Impact of our grant making

- Improving people's life skills, education and employment opportunities
- Maximising people's ability to strengthen their communities
- Providing people with opportunities to access local services
- Advancing people's physical and mental health
- Connecting people to the arts and culture
- Transforming people's access to the environment and public spaces



Children and young people

South Weston Activity Network (SWAN)

North Somerset holds some of the most and least disadvantaged areas in the country. Weston-super-Mare has areas within the most deprived 1% nationally, including South Ward.

SWAN was awarded £3,000 from the North Somerset Council Children & Young People Programme towards school holiday activity days, forest school sessions and a free lunch club for young people aged 7-16 years across South Ward. Activities, including day camps, provide opportunities that these young people would not otherwise have to get away, learn, have fun and make positive friendships. At the lunch club, which serves up to 50 children per day, trained workers can engage hard-to-reach young people who might not otherwise access local services. SWAN offers a chance for these young people living in very disadvantaged areas to enjoy the same opportunities as their peers.



People in poverty

Woodworks Project

Poverty and exclusion is a growing problem in the UK today, with 1 in 5 of the population living below the UK's poverty line. According to research by the Institute for Fiscal Studies (IFS), poverty in the UK is set to rise further between 2015 and 2020. Those most likely to suffer are people unable to access mainstream opportunities for education or employment.

The Woodworks Project in Bath runs a successful furniture workshop, helping the community's most vulnerable and disadvantaged people to move forward in their lives. Thanks to a grant of £33,800 (over two years) from the Henry Smith Charitable Fund, the project offers supported training in furniture making, restoration and upholstery to people who have suffered with mental or physical ill health, people in recovery from drug or alcohol addictions, or people who find themselves marginalised from mainstream opportunities for other reasons. The Woodworks Project provides an inclusive and safe space where people can learn new skills, contribute, increase self-confidence, connect with others and increase their employability.



People with disabilities

Avon Wildlife Trust

Avon Gorge in Bristol has a new wildlife haven created by the Avon Wildlife Trust, thanks in part to a donor-directed grant of £6,000 over two years from the Basil Brown Fund.

Bennett's Patch and White's Paddock Reserve in the Avon Gorge has been created as part of celebrations to mark Bristol's year as European Green Capital. The project has seen a 12 acre, former sports facility become a wildlife haven with wildflower meadows and over 4,000 trees. The Avon Gorge is an essential wildlife corridor for foraging species including several species of bat, and is home to badgers, hedgehogs, slow worms and some unique plant species. Over 1,500 people have been involved in making the reserve become a reality, and it has inspired people to take action to create and restore homes for wildlife across Bristol as part of the Trust's My Wild City initiative. The grant from the Basil Brown Fund helped to explore the feasibility of the project, which included access within the site for older people and disabled, and helped secure further funding of circa £600,000. An Access for All trail now runs through the reserve with disabled facilities available for pre-booked groups.

Disadvantaged communities

Edible Futures

As European Green Capital for 2015, Bristol is leading the way in sustainable community projects that benefit people and planet.

One of these is Edible Futures, a community food growing group that engages local people in growing their own food, chemical free. As well as selling locally grown vegetables to Bristol's households and restaurants, they also create open access 'edible landscapes' in public spaces, such as parks and schools, among other initiatives. The group was awarded a grant from the Bristol 2015 Small Grants Fund to engage and train local hard-to-reach young people in a sustainable building project on their land in Frenchay. The building, known as The Green Hub, will provide much needed indoor space for food storage, agriculture courses and community activities. Offering comfortable shelter from the elements will encourage greater use of the site by local people and community groups.



Older people

Frampton Cotterell and Coalpit Health Village Action

In South Gloucestershire, 38% of the population aged 65+ live alone. The % is higher for those over 75 and isolation is a real issue. Older people are also particularly vulnerable due to low incomes, lack of access to transport, or ill health – their own or a partner's.

Frampton Cotterell & Coalpit Health Village Action received a grant of £1,000 from the Older People's Fund towards its Good Neighbours scheme. The scheme involves 42 volunteers from the village regularly visiting isolated older people, offering company and support with basic tasks that can be difficult for older people, such as work in the garden. The group supports several older people who have been bereaved and some who are carers for partners with Alzheimer's disease.

Good Neighbours is hoping to expand over time, recruiting more local volunteers to engage with isolated older people, enhancing well-being and strengthening village communities.



Minority communities

Bristol Hospitality Network

The work of small community organisations is often crucial in protecting the most vulnerable in society. In Bristol, there are an estimated 150 destitute asylum seekers – people who have come to the UK to ask for protection and safety but who are neither allowed to work nor entitled to any form of support from the government. They have no stable source of food, money or housing, and are regularly forced to live on the streets.

Bristol Hospitality Network (BHN) was established by a group of concerned local residents who wanted to offer their spare rooms to asylum seekers experiencing destitution. Last year, BHN received a Step Change grant to allow them to grow their network and make it more sustainable. Additionally, a grant from the Bristol 2015 Small Grants Fund has enabled a food growing project to be run from BHN's community allotment in Speedwell, where asylum seekers and refugees can access green outside space; participate in food growing and receive free fresh vegetables; cook, eat and relax; and meet new people. This funding, totalling £18,700, will mean greater opportunities and support for a very vulnerable and hard-to-reach group.



Small Grants and *Big Impact:* Southmead's story



Deana Perry and Tenna Blundell

Families

The Community Bus

In rural areas like North East Somerset, spaces where community members can get together can be limited. This can be very isolating, especially for parents with young children or those on low incomes who cannot afford to travel to services in urban areas.

Meeting this need is The Community Bus, a mobile family and play centre which travels to isolated, rural communities. The Bus, a converted double-decker, offers low-cost play sessions for young children and a meeting place for local parents. They received a grant of £1,500 from the Healthy Lives, Healthy People Fund to continue their family sessions in High Littleton, an isolated village in B&NES with pockets of deprivation. These sessions improve children's confidence and development, offer parents practical and emotional support and increase community cohesion.

"There's a sense that people think nobody cares and nothing will change" explains Deana Perry, local resident and member of the Southmead Community Plan steering group.

"I want to make a better future for Southmead and I want local residents to know that their views are important. Tenna and I, together with a number of local volunteers, door-knocked the estate to ask people their views and then we worked with others to put all these ideas into a Community Plan. We have shown that there is a lot that is positive about Southmead, that residents' views

are important and that together we can make a better Southmead".

A small grant from QCF's Community Planning Fund supported Deana, Tenna and other local residents to develop and launch their new Community Plan, which has directly helped Southmead win an additional £200,000 for community projects from Spirit of 2012 as part of the Olympic Games Legacy.

"The grant from the QCF Community Planning Fund has brought in significant additional funding to take work forward with the local community. The ability to access this larger funding stream shows the importance of this small grants fund to help local community

groups get off the ground and develop a strong voice for their own futures" Helen Bone, QCF.

QCF is managing the Spirit of 2012 Fund and will be working with the Southmead community over the next three years to ensure that residents continue to be at the heart of decisions regarding how the £200,000 is invested.

Deana added, "Since hearing about the additional funding we have had some great meetings and though it's quite daunting it's also now very exciting to think of the road ahead."

To find out more about the Southmead Community Plan visit southmeadcommunityplan.co.uk

Quay Environment Fund Challenge

Providing you with an opportunity to make sustainable difference



Horfield District Allotment

During Bristol's year as European Green Capital we were asked by Bristol 2015 to distribute a grants fund totalling £225,000 aimed at:

- Increasing people's access to affordable, healthy, sustainable food
- Enabling more people to access affordable energy
- Inspiring and educating people about nature and how to care for it
- Providing activities and initiatives that help people re-use, repair and share materials
- Helping people discover more sustainable transport (e.g. walking, cycling or public transport)

Some great projects have been supported reaching many communities throughout the city. To help develop an on-going source of support for these and other projects beyond 2015, we are making available up to £250,000

in 2:1 match funding donations from individuals, companies and other philanthropic sources.

This offer is available for 12 months and will help to establish both a long-term, sustainable source of support for environmental projects as well as provide much needed short-term funding to sustain the gains of Bristol's year as European Green Capital.

This could mean an individual can set up a fund with us worth £87,500 for as little as £34,375.

Please contact Ronnie Brown ronnie.brown@quartetcf.org.uk on 0117 989 7705 for further details about how you can help secure a Green Capital Legacy for Bristol.

If you are interested in...

...having your own Charitable Fund

– whether you are thinking of setting up a Charitable Trust or transferring an existing trust we can offer you all the flexibility and control of an independent Charitable Trust without any of the administrative burden.

To find out more contact Ronnie Brown 0117 989 7705 ronnie.brown@quartetcf.org.uk

...responding to immediate need

– you can make a one off or a regular donation. You can direct your donation to one of our Themed Funds or leave it to us to decide where your donation can make the biggest difference within the local community.

To find out more contact Lucy Gilbert 0117 989 7710 lucy.gilbert@quartetcf.org.uk

...leaving something in your Will

– a legacy provides your local community with a gift of real and lasting value. All legacies are invested, with the income available to support the causes you care about. Existing fund holders can also direct legacies to their funds.

To find out more contact Jilly Edwards 07584 194365 jilly.edwards@quartetcf.org.uk

... sharing and learning about philanthropy

– you can join our Philanthropy Fellowship and, with others, gain a greater understanding of local needs and ways in which you can help.

To find out more contact Ronnie Brown 0117 989 7705 ronnie.brown@quartetcf.org.uk

...becoming a QCF Ambassador

– you can join our Ambassadors group and help promote the work of QCF whilst also engaging in a series of fun, educational and social activities.

To find out more contact Miriam Tait 0117 989 7704 miriam.tait@quartetcf.org.uk

Our people

We are fortunate as a Community Foundation to be supported by so many excellent staff, trustees, committee members and volunteers.

Patrons

Lord-Lieutenant of Bristol,
Mary Prior MBE DSJ JP

Lord-Lieutenant of
Gloucestershire,
Dame Janet Trotter DME

Bishop of Bristol the Rt
Rev Bishop Mike Hill

President

Trevor Smallwood OBE DL

Vice-Presidents

Will Bee

Gillian Camm DL

Chris Curling

Geoff Matthews

Mary Prior MBE DSJ JP

Professor Murray Stewart

Sir James Tidmarsh

KCVO MBE JP

Lady Wills



The Philanthropy Team, left to right: Lucy Gilbert, Andrew O’Sullivan, David Triggles-Wells, Ronnie Brown, Miriam Tait, Julie Newman. Not shown: Helen Bone



CEO Sue Turner



Finance and Operations Team, left to right: Tracey Hill, Diane Kent, Sarah Crispin. Not shown: Jacquie Chinn (volunteer)



B&NES office : Jilly Edwards

Our people

Trustees



Robert Bourns DL Chair of Trustees

Senior Partner with TLT, a Bristol-based, now national law firm that holds funds with QCF. Although specialising in employment and partnership work, he is passionate about community. A Trustee of ABLAZE, a founder of Friends of Room 13 (Hareclive) Ltd, he is Vice President of The Law Society of England & Wales and will be President for the year beginning July 2016.



Nick Baker

Nick is Chairman of investment company Concertare Partners. A trustee and Director of The Baker Trust, a Governor of Colston's School and of The Downs School in Wraxall. A member of The Society of Merchant Venturers and a member of the Campaign Cabinet at the University of the West of England. Nick is a member of the QCF Philanthropy & Marketing Committee.



John Cullum DL

A business career in the motor industry and roles including Finance Director and Chief Executive, John is a Non-Exec Director/Chairman on various business boards including his son Jamie Cullum's music business. A Deputy Lieutenant of Somerset, Chair of Bath Royal United Hospital's Forever Friends Appeal Group, Chair of Bath Festivals and a Patron of Bath Volunteer Centre. John is a member of the QCF B&NES area committee.



Lesley Freed

The Founder and Director of SACO, the award-winning serviced apartment company based in the South West. Lesley is actively involved in a number of charities as a trustee of Avon Wildlife Trust and a Governor of Colston's Girls School and Fairlawn School. Lesley is a member of the QCF Programmes Committee.



Merlyn Ipinson Fleming Chair, Governance, HR & Operations Committee

A senior human resources professional with expertise in change management, management development and employee relations. A trustee and Vice Chair of the Citizens Advice Bureau, a board member on two community trust boards plus a school governor for Bristol Cathedral Choir School. Merlyn chairs QCF's Governance, HR & Operations Committee.



Dave Harvey

The BBC's Business Correspondent in the West, he regularly features on BBC1's Points West and on the BBC's local radio stations. Before coming home to Bristol, Dave worked across the BBC. He was Melyn Bragg's producer on Radio 4 and the token man on Radio 4's Woman's Hour.



Annie Kilvington

Solicitor and former partner at Pinsent Masons. Specialist legal advisor to the domestic and international construction industry, and currently in-house counsel for a major international hotel chain. Has trained and volunteered as a Gateway Assessor for the Citizens Advice Bureau. Annie is Chair elect of the QCF Philanthropy & Marketing Committee.



Trevor Leonard Chair, Finance & Investment Committee

An accountant with a career in financial services initially with Clerical Medical Investment Group and then HBOS Financial Services where he was Finance Director. His wife Janet is involved with the family support charity Home-Start Bristol and he has become Treasurer there. Trevor chairs the Finance & Investment Committee for QCF.



Pat Meehan

A Chartered Financial Planner, Pat is a Partner (Financial Planning and Wealth Management) with Towry, based in Bristol. A former Chair of Trustees for the Centre for Sustainable Energy and a past board member and Bristol Chair of the Institute of Financial Planning. Pat is a member of the QCF Philanthropy & Marketing Committee.



Jane Moss Chair, Philanthropy & Marketing Committee

A retired Partner of Osborne Clarke, Jane is a trustee of her local Relief in Need Charity, Chairman of her Parish Council and a Governor of Clifton College. Originally an Ambassador she became a trustee and is now Chair of the Philanthropy and Marketing Committee and sits on the Ambassadors Committee.



Hilary Neal Chair, Programmes Committee and North Somerset area committee

A career in Government service as a policy administrator nationally and internationally. Seven years at the Government Office for the South West, latterly Acting Regional Director. A trustee and Chair of Curzon Cinema and Arts in Clevedon and

Chair of Governors of Mary Elton Primary School. Hilary Chairs the QCF Programmes Committee.



Christopher Sharp QC

After reading Jurisprudence at Oxford, Christopher has practised as a barrister, latterly a QC, in Bristol for 40 years. He is a Deputy Judge and a Visiting Fellow at UWE. Christopher, who is a member of the QCF Programmes Committee, became interested in QCF and its community-based projects through its ethos of empowerment, enablement and connection.



Becky Ricards Small Chair, B&NES area committee

A lawyer with Withy King handling private wealth and succession planning matters for private clients, with experience of dealing with probate and estate administrations. She also heads up the Elderly and Incapacity Team and sits on the Trainee Recruitment Panel. Awarded the national title of being one of the 'Top 35 under 35' Private Client practitioners. Becky participates in media broadcasts and lectures in her field of Law. Becky is Chair of the B&NES Committee for QCF.



Julian Telling

A Bristolian and businessman who flies for an airline, runs a property portfolio and private equity business plus holds a number of non-executive directorships. He and his wife are QCF fund holders and his wife Lindsay an Ambassadors Committee member. A Paul Harris Fellow (Rotary), a member of the Honourable Knights of the Round Table, on the fundraising committee of Above and Beyond, a Director of the Clifton Club and a Governor at Clifton College. Julian is on the QCF Philanthropy & Marketing Committee.

Our people

Ambassadors Committee

Helen Currie (Chair)
 Sue Beswick
 Emma Cryer
 Liddy Hill
 Jane Moss
 Lindsay Telling
 Mel Waycott

Co-opted Members of Committees

Greg Corrigan
 Nicola Cutler
 Jeff Durant
 Quentin Elston
 Karen Gill
 Oona Goldsworthy
 Mark Graham
 Jo Grant
 Michael Hill
 Chris Keeling-Rowe
 William Lee
 Jamie Luck
 Cara MacMahon
 Jim McAuliffe
 Graham Massey
 Martin Mohan
 Andrew Monk
 Mike Plows
 Ben Silvey
 Kannan Siva
 Bina Shah
 Robert Skinner
 Simon Tapscott
 John Whitewood
 John Wilkinson

Advisors

We are grateful for the support and advice given by members of the following advisory panels who assist with distributing grants:

B&NES Healthy Lives, Healthy People
 B&NES Supporting Communities
 Bath and West Community Energy Fund
 Bristol City Council Community Investment Small Grants
 BYCA
 Comic Relief, Local Communities
 Community Games
 Mall Fountain Fund
 Santander SEDA
 Sport Relief Community Cash
 Stoke Park Group Friends' Fund
 University of Bristol RAG

Registered Auditors

PricewaterhouseCoopers LLP
 2 Glass Wharf
 Bristol BS2 0FR

Legal Advisors

Osborne Clarke
 2 Temple Back
 East Temple Quay
 Bristol BS1 6EG

Veale Wasborough Vizards

Orchard Court
 Orchard Lane
 Bristol BS1 5WS

Bankers

Bank of Scotland/Lloyds Plc
 Unit 44-45
 George White Street
 Bristol BS1 3BA

Investment Managers

Smith & Williamson
 Portwall Place
 Portwall Lane
 Bristol BS1 6NA

CCLA
 Senator House
 85 Queen Victoria St.
 London EC4V 4ET

Thank You

Organisations

We would like to thank all our volunteers for their invaluable help during the year.

Ambitious PR
 Brunel Print
 BurleighPortishead
 Business West
 Clifton College
 Colour and Thing
 DAC Beachcroft
 Jonathan Duckworth
 Osborne Clarke
 PricewaterhouseCoopers LLP
 Prior Park College
 Smith and Williamson
 Sovereign Wealth Management
 Thrings
 TLT
 University of Bath
 Veale Wasbrough Vizards
 Wessex Water
 Withy King
 Zenith International

Sponsors

Bristol Grammar School and Quilter Cheviot are proud to support Quartet Community Foundation by hosting their Annual Celebration event on 14 October 2015.

Paradigm Norton have provided sponsorship towards the production of our 2015 Annual Review.

Our thanks to all our sponsors.

Trustees

Thank you to Stephen Parsons MBE DL who stood down, after four years, as Chair of QCF in October 2014. Our thanks also to Sandy Hore-Ruthven, John Kane, Chris Pople, Vernon Samuels and Lin Whitfield who all retired as Trustees during the year.

Staff

Thank you to Alice Meason who left after 27 years with us to move to France.

Thank you to Maria Dunn who left after 9 years with us to pursue a career in midwifery.

Committees

Thank you to John Brentnall, Dave Dixon, Rebecca Mear, Cedric Nash, Hannah Ongaro, Simon Pullen, Alison Reed and Karen White who all stood down as committee members and we are grateful for their support to us.

In memory

During the year a number of people who cared about the local community have died and we pay our respects to them below.

Stephen Trinder

The Stephen and Sally Trinder Fund was set up in 2010 to support local organisations working with young and old people throughout the city. With an in-depth interest in local issues, Stephen had directed the Fund to support a range of great local projects over the past 5 years and, as a permanent fund, it will continue to provide such support for the long-term benefit of our local community.

Christopher Marsden-Smedley

who had been a long-standing supporter of our work for 20 years

Robert Birkett

who had been a QCF Ambassador

Tim Lloyd-Yates

Founder of Alive!, a charity dedicated to improving the quality of life of older people in care

Vera Hayes

who left a legacy donation to Bristol Mayor's Fund

Maria Anna Pierina Adams

who left a legacy donation to Stoke Park Group Friends' Fund

Financials

Trustees statement

The summarised financial statements are not the full annual report and financial statements but a summary of information delivered from both the charity's Statement of Financial Activities and the charity's Balance Sheet. The summarised financial statements do not contain additional information derived from the Report of the Trustees.

The full annual report and financial statements, from which the summarised financial statements are derived, were approved by the Trustees on 15th September 2015 and copies have been filed with the Charity Commission and with the Registrar of Companies. The independent auditors have issued an unqualified report on the full financial statements and on the consistency of the Report of the Trustees with those financial statements. The statement in the independent auditors' report, under section 496 of the Companies Act 2006, was unqualified. The full independent auditors' report contained no statement under sections 498(2)(a) and (b) or 498(3) of the Companies Act 2006.

The full annual report and financial statements are available, free of charge, from the Company Secretary, Quartet Community Foundation, Royal Oak House, Royal Oak Avenue, Bristol, BS1 4GB or by email from info@quartetcf.org.uk, or can be downloaded from the Charity Commission website.

R Bourns DL, Chair of Trustees
22nd September 2015

Notes:

The maintenance and integrity of the Quartet Community Foundation website is the responsibility of the directors; the work carried out by the auditors does not involve consideration of these matters and, accordingly, the auditors accept no responsibility for any changes that may have occurred to the full annual financial statements or the summarised financial statements since they were initially presented on the web site.

Legislation in the United Kingdom governing the preparation and dissemination of financial statements may differ from legislation in other jurisdictions.

Independent auditors' statement to the members of Quartet Community Foundation

We have examined the summarised financial statements which comprise the Summary Statement of Financial Activities and the Summary Balance Sheet.

Respective responsibilities of directors and auditors

The directors are responsible for preparing the summarised annual report in accordance with applicable United Kingdom Generally Accepted Accounting Practice and the Companies Act 2006.

Our responsibility is to report to you our opinion on the consistency of the summarised financial statements within the summarised annual report with the full financial statements, and its compliance with the relevant requirements of section 427 of the Companies Act 2006 and the regulations made thereunder.

We also read the other information contained in the annual report and consider the implications for our statement if we become aware of any apparent misstatements or material inconsistencies with the summarised financial statements. The other information comprises only the items listed on the contents page.

This statement, including the opinion, has been prepared for and only for the company's members as a body in accordance with section 427 of the Companies Act 2006 and for no other purpose. We do not, in giving this opinion, accept or assume responsibility for any other purpose or to any other person to whom this statement is shown or into whose hands it may come save where expressly agreed or by our prior consent in writing.

We conducted our work in accordance with Bulletin 2008/3 issued by the Auditing Practices Board. Our report on the company's full annual financial statements describes the basis of our audit opinion on those financial statements and the trustees' report.

Opinion

In our opinion, the summarised financial statements are consistent with the full annual financial statements of Quartet Community Foundation for the year ended 31 March 2015 and comply with the applicable requirements of section 427 of the Companies Act 2006, and the regulations made thereunder.

We have not considered the effects of any events between the date on which we signed our report on the full financial statements (16th September 2015) and the date of this statement.

PricewaterhouseCoopers LLP, Chartered Accountants and Statutory Auditors, Bristol
22nd September 2015

Financials

Summary balance sheet at 31 March 2015

	31 March 2015	31 March 2014
	£	£
Fixed assets		
Tangible fixed assets	89,253	92,310
Investments		
- Property	1,150,000	1,015,000
- Other	22,876,284	19,200,100
Total fixed assets	24,115,537	20,307,410
Current assets		
Debtors	232,526	222,791
Cash at bank and in hand	2,045,241	2,040,446
Total current assets	2,277,767	2,263,237
Creditors: amounts falling due within one year	(439,144)	(528,693)
Net current assets	1,838,623	1,734,544
Net assets	25,954,160	22,041,954
The funds of the Charity		
Capital funds		
Endowment funds	23,882,681	20,198,363
Revenue funds		
Unrestricted funds	339,452	334,549
Restricted funds	1,732,027	1,509,042
	2,071,479	1,843,591
Total charity funds	25,954,160	22,041,954

Summary statement of financial activities for the year ended 31 March 2015

	Unrestricted revenue funds	Restricted revenue funds	Endowment funds	Total Year Ended 31 March 2015	Total Year Ended 31 March 2014
	£	£	£	£	£
Incoming resources					
From generated funds					
Voluntary income	352,984	2,268,858	2,283,654	4,905,496	4,004,603
Gifts in kind	51,620	-	-	51,620	63,385
Investment properties	66,708	39,947	4,067	110,722	110,380
Investment income	117,080	350,032	131	467,243	419,904
Other incoming resources					
Consultancy and other income	44,696	-	-	44,696	29,611
Total incoming resources	633,088	2,658,837	2,287,852	5,579,777	4,627,883
Resources expended					
Costs of generating funds					
Investment properties	33,001	-	-	33,001	21,880
Communications and publicity	63,259	-	-	63,259	65,880
Fund development	115,657	-	-	115,657	121,356
Donor services	109,972	-	-	109,972	122,597
Consultancy	30,792	-	-	30,792	-
Investment management costs	13,197	-	59,794	72,991	72,219
	365,878	-	59,794	425,672	403,932
Charitable activities					
Grants payable	106,302	2,637,914	-	2,744,216	2,961,893
Draw-downs	-	-	321,142	321,142	177,670
Support costs of grants programme	118,770	18,162	-	136,932	163,281
Governance costs	84,160	-	-	84,160	76,913
	309,232	2,656,076	321,142	3,286,450	3,379,757
Total resources expended	675,110	2,656,076	380,936	3,712,122	3,783,689
Net incoming/(outgoing) resources before transfers					
Transfers between funds	(42,022)	2,761	1,906,916	1,876,655	844,194
	2,933	27,099	(30,032)	-	-
Net incoming/(outgoing) resources before other recognised gains and losses					
Gains on investment assets	(39,089)	29,860	1,876,884	1,867,655	844,194
	43,992	193,125	1,807,434	2,044,551	115,651
Net movement in funds	4,903	222,985	3,684,318	3,912,206	959,845
Fund Balance b/f at 1 April	334,549	1,509,042	20,198,363	22,041,954	21,082,109
Fund Balance c/f at 31 March	339,452	1,732,027	23,882,681	25,954,160	22,041,954

Our sponsors

CCLA



Oliver Jones-Davies, MA, FCSI
Director, Client investments

ccla.co.uk

CCLA

Quartet Community Foundation (QCF) plays such an important role raising precious resources to support local community action. CCLA is privileged to manage funds for many of the community foundations throughout England, including QCF.

For over 50 years we have provided competitive and attractive investment management services. Our products and services have a strong long-term performance record, are fairly priced, managed responsibly and in a manner consistent with our clients' ethics.

Our people understand charities, foundations and trusts as well as their particular needs and challenges. Our ownership ensures our stability and independence. CCLA Investment Management Limited and CCLA Fund Managers Limited are authorised and regulated by the Financial Conduct Authority.

Smith & Williamson

I am delighted that Smith & Williamson is sponsoring this year's annual report, which celebrates Quartet Community Foundation's ongoing support of local communities across the region.



John Erskine,
Head of Investment Management, Bristol office

smith.williamson.co.uk



We are proud to be Quartet's Investment Manager and enjoy working with such an important and admired organisation to achieve the aim of building the Endowment Fund in order to meet current needs, as well as those of future generations.

Smith & Williamson provides investment services for private individuals, charities and institutions, with around £16 billion* of funds under management and advice. We operate from 12 offices nationally and employ over 160 qualified investment professionals.

The value of investments and the income from them may fall as well as rise and investors may not receive back the original amount invested.

Smith & Williamson Investment Management LLP
Authorised and regulated by the Financial Conduct Authority

*(As at 30 June 2015)



Bristol office

Royal Oak House
Royal Oak Avenue
Bristol BS1 4GB
Tel: 0117 989 7700

Follow us on:

twitter @QuartetCF
facebook.com/quartet.cf

Enquiries: info@quartetcf.org.uk

Bath & North East Somerset office

7 Kingsmead Square
Bath, BA1 2AB
Tel: 01225 420 300

North Somerset office

Badger Centre
3-6 Wadham Street
Weston-super-Mare
BS23 1JY
Tel: 01934 641 965

Media enquiries

Sue Turner, CEO
Tel: 0117 989 7702

Email: sue.turner@quartetcf.org.uk

Grants enquiries

Andrew O'Sullivan or Julie Newman
Tel: 0117 989 7700

Email: applications@quartetcf.org.uk

Quartet Community Foundation is...

...a member of the UK Community Foundations network, an umbrella organisation which promotes and supports 48 quality accredited community foundations across the UK.

