



Quartet  
Community  
Foundation

Bristol  
North Somerset  
South Gloucestershire  
Bath & North East Somerset

Local philanthropy for  
the West of England

# Here today, here tomorrow

35 years of deep rooted change



Annual Report 2021/22



# Contents

|  |    |
|--|----|
| Facing forward together                  | 01 |
| Building resilience                      | 02 |
| A three-tiered approach                  | 04 |
| The four areas of Quartet                | 06 |
| Jubilee celebrations                     | 08 |
| 35 years of deep rooted change           | 09 |
| 35 years of Quartet                      | 10 |
| Looking to the future                    | 12 |
| Cost of living crisis                    | 14 |
| Climate resilience and nature recovery   | 16 |
| Giving generously together               | 17 |
| Our funds                                | 18 |
| ProHelp: Doing good (with your) business | 22 |
| Remembering...                           | 23 |
| Thank you                                | 24 |
| Our report sponsors                      | 25 |

## Bristol office

Royal Oak House  
Royal Oak Avenue  
Bristol BS1 4GB  
0117 989 7700

## Bath office

Northgate House  
Bath BA1 1RG  
01225 420300

[quartetcf.org.uk](http://quartetcf.org.uk)  
[info@quartetcf.org.uk](mailto:info@quartetcf.org.uk)

## Professional Advisers

**Independent Auditors**  
- Bishop Fleming

**Legal Advisers**  
- Osborne Clarke  
- Veale Wasborough Vizards

**Investment Managers**  
- Rathbones  
- CCLA

**Bankers**  
- Bank of Scotland



Registered Charity Number: 1080418  
A company limited by guarantee  
Registered in England and Wales, Company Number: 3981052  
Registered office: Royal Oak House, Royal Oak Avenue, Bristol BS1 4GB





# Facing forward together

When our previous report led with the title ‘A Year Like No Other’ it reflected our belief that the Covid pandemic had been a devastating but one-off event. In the months that followed, we set about shaping a recovery programme and we talked with voluntary sector organisations right across the West of England. As a trusted partner, they shared their experiences with us, both the good and the bad. We listened carefully to what they most needed to get back on their feet and resume delivery of core services. As you’ll read, we’ve been rolling out this programme for the past year, helping organisations to improve their resilience and be ready to face future challenges.

What we couldn’t foresee was that another challenge, one comparable in so many ways to the magnitude of the pandemic, was already fast approaching. We publish this report under the shadow of the worst cost of living crisis in four decades. Perhaps more.

Our report records our recent work and, 35 years on from our foundation, charts the key milestones in Quartet’s development. It looks too, as it must, to the future. The cost of living crisis is already affecting us all, but not equally. Later in this report (page 16/17) we share what we’re doing now and how you can play an active part in these plans.

We’re indebted to the many fund holders, organisations and volunteers who already support our work. In truth, we need more people to join them if we are to provide the full support communities need. If you’re ready to explore how, by giving through Quartet, you can reach those most in need who live and work around you, please contact us today.

— Sue Mountstevens, Chair & Suzanne Rolt, CEO



“

**We highly regard Quartet’s particular interest in small groups and charities, supporting the work and efforts of the people who want to give to their community. Not just because we are one of these groups, but because we believe strongly that work at this grass roots level makes a huge difference to people’s lives.**

”

— Red Tent Project



# Building resilience

## Our Year in Focus 2021/22

Building relationships and resources over 35 years meant we were well placed to support community organisations as the covid crisis hit, quickly raising and distributing record funding from local and national sources (see A Year Like No Other, our 2020/21 covid impact report).

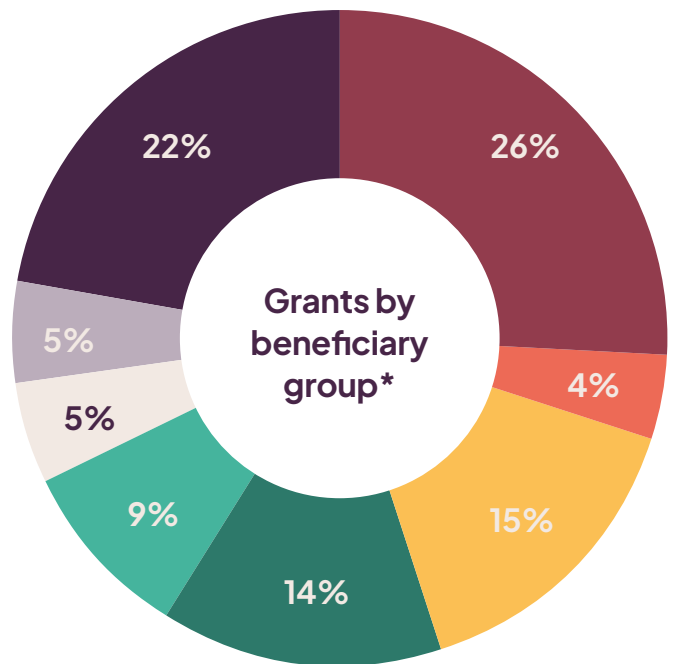
Through listening to groups and learning from local research, we soon realised that community organisations, deep in emergency delivery and survival mode, would also need longer-term support to adjust, recover and develop their resilience to future shocks. Groups told us they needed different kinds of funds than most funders were offering, and easier ways to access them. And so, the past 16 months have seen us evolving the ways we work with our fund holders, partners and grantees to try and meet these needs.

We've made some intentional shifts to our programmes and processes, many building on practices we've successfully employed before. These include a greater emphasis on offering grants for the core running costs of an organisation, multi-year funding that offers security, and grants that help groups make strategic changes. New this year has been working with potential grantees in ways that aim to reduce competition, using discussion to target our funding where it will bring the greatest benefit for whole sectors. Last year we launched a new Recovery grant programme, funded from our own reserves, to do just this.

Awarded **888** grants to a value of

# £4,848,905

in 2021/22



### Beneficiaries

- Children & young people
- Parents & families
- Disabled people & people with health issues
- People in poverty or on low incomes
- Minoritised communities
- Older people
- Other, eg carers, women, victims of crime
- Geographic communities



The past 16 months have also seen us developing our collaborative working, harnessing not only financial resources, but also time, skills and engagement. Many of our fund holders and partners are increasingly working to align their funding to common goals, as demonstrated by our highly successful Funding the Future programme (see also page 22 on ProHelp). We think this evolution of our work and approach will provide a solid basis for bringing people together across the West of England as we tackle intensifying issues such as the climate and cost of living crises.

Finally, we have been consciously developing our understanding of where our funding is most needed, how fairly our funding is distributed, and putting more measures in place to ensure our help is accessible to everyone doing good work across our areas.

“

**Joined up giving has more impact – joined up with other donors and joined up thinking about charities. It’s better to be part of growing something big than giving individually.**

”

— Isobel Michael, fund holder

## Main outcomes of our funding

(based on sample of 349 end of grant reports)

All of the projects we support have multiple, wide-ranging outcomes but these are the most common outcomes reported by grantees this year.

**1/3**

A third of our funding improved people’s mental health and wellbeing

**1/4**

A quarter of our funding made organisations more sustainable

**1/5**

A fifth of our funding helped groups to build their capacity

**1/4**

Over a quarter of our funding increased people’s access to vital services and support

Our average grant size last year was

**£7,213**

representing a 58% increase over 5 years



# A three-tiered approach

We have been taking three complementary approaches to supporting local community organisations since 2021/22. These include Quartet's 'bread and butter' work, supporting the important services and developments groups provide for communities through the grants programmes we run for ourselves and others. We have also been offering support for individual organisations to develop and strengthen their work, through our new Resilience programme. And finally, we have been awarding larger, strategic grants that are designed to help whole sectors, through our experimental Recovery programme.



## 1 Support for direct service delivery

Our general and targeted grant programmes have continued to support crucial work in communities. This period saw us dedicate more time to getting to know groups that hadn't received funding from us before.

Caafi Health, for example, supports Black, Asian, minoritised and underserved communities to access and engage with health services, reducing health inequalities and improving health outcomes. They received pro bono support through our ProHelp service this year, as well as their first Express grant of £5,000 towards their running costs.



You reliably provide medium and large pots of funding that are easy to apply for and quick to receive. This is absolutely vital to the continued provision of projects like ours.



— National Food Service Bristol CIC

### Multi-year grants

**£1.24m** 

from 1 April 2021–31 July 2022, we've awarded 35 multi-year grants totalling £1.24m

### First time applicants

**18%**

of grants went to groups applying to us for the first time, a strong indicator that we are an accessible funder with good reach



## 2 Increasing organisational resilience

Our Resilience programme, launched in April 2021, offered funding for community groups to improve their resilience and adjust to changing times. This included grants to develop their capacity, governance, business models, strategies and more. We approved 85 Resilience grants worth over £775,000 (around 15% of our total grant-making) in 2021/22.

Two-fifths of these grants supported organisations' core running costs, which groups have told us they desperately need and find difficult to source elsewhere. Often an unpopular choice for donors, we're fortunate that many of our fund holders see the value in core costs support. Around 21 of our fund holders came together to support these Resilience grants.



**Your open door for conversations and desire to respond to new and unexpected situations is excellent and much needed.**



— West of England Rural Network

## 3 Supporting specialist sectors

To strengthen the core of the community sector overall, last year Quartet's trustees agreed to use our own reserves to support an experimental way of working that we call our Recovery programme. This offers multi-year strategic grants based on the needs of whole sectors rather than individual organisations. To date we've given out £247,720 in 13 grants, many of them providing funding over two years.

Our first Recovery grant went to Bristol Refugee and Asylum Seekers Partnership (BRASP), a group of 16 organisations working together to ensure their services are joined up and effective. A grant of £40,000 over two years is providing staff capacity to the partnership, enabling them to collaborate better and ensure that refugees and asylum seekers lead on the design of services within and beyond the sector.



**Many funders are focused, understandably, on direct service provision, but without a thriving sector then provision long-term is compromised. Quartet understands this and supports sectors to thrive which in turn pays dividends in communities.**



— Learning Partnership West

### Resilience grants\*

# 41%

of funding was for groups' running costs, essential funding that groups tell us many other funders won't offer

# 31%

of funding has helped groups recruit and train staff and volunteers

### Leveraged funding figure

# Every £1



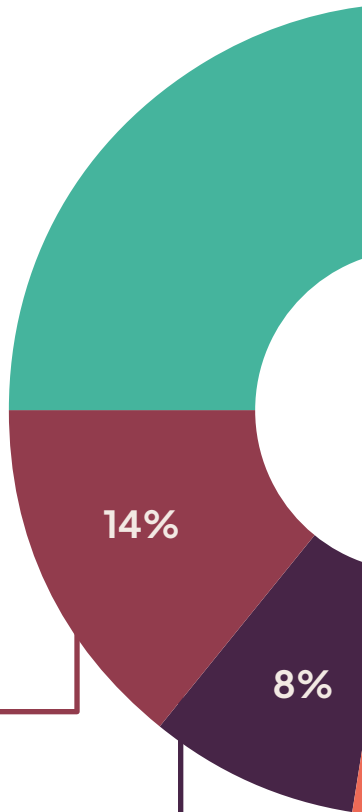
from Quartet has enabled groups to unlock an extra **£2** of additional funding from other sources

\*Data from the second round of our Resilience funding



# The four areas of Quartet

Our work reaches out across four areas. While we take a whole 'West of England' approach to our work, we remain mindful of each area's unique context and needs.



## North Somerset

### Cost of living

A grant of £40,000 over two years was awarded to Citizens Advice North Somerset from the North Somerset Community Partnership Fund. The grant will increase face-to-face advice services across North Somerset. With demand increasing due to the cost of living crisis and impact of the pandemic, the group hopes to reach 50% more clients in 2022–23 than in the previous year.

### Collaborative funding

Clevedon Men's Shed is a community workshop where men can come together to work on practical projects, reducing social isolation and benefiting the community as a whole. In April 2022, their outdoor seating area was damaged by a fire lit by trespassers. A grant of £5,000, funded through our collaborative funding programme with the St Monica Trust, is helping the group to secure the site allowing them to rebuild with confidence for the future.

## South Gloucestershire

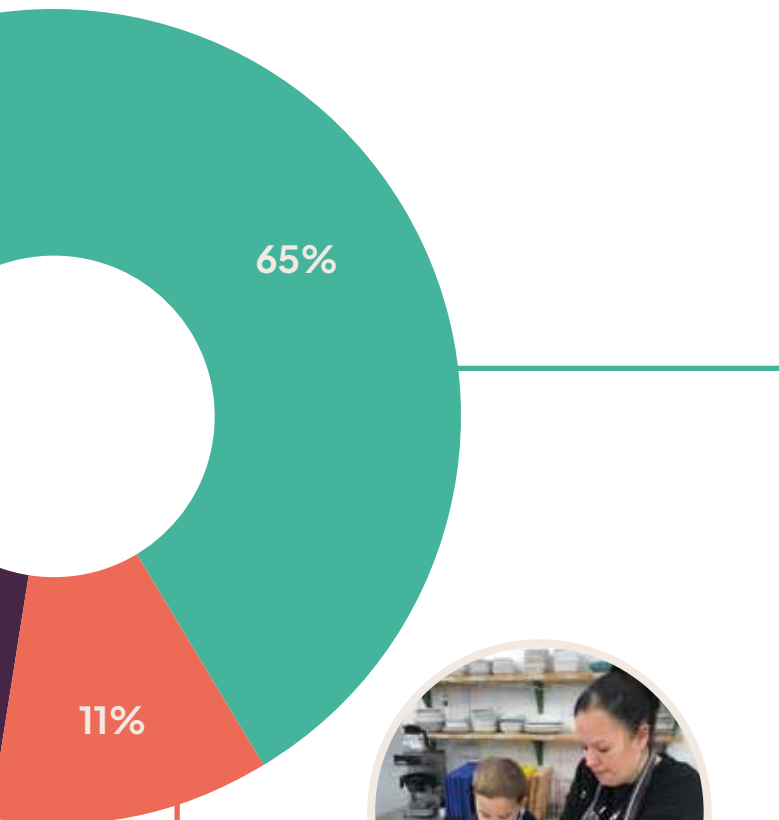
### Children and young people

South Gloucestershire Playscheme received a grant of £9,989 to expand their service. Working in priority areas and with high numbers of children on free school meals, this funding has helped them to run during additional holiday periods and expand their offer to children with special educational needs and disabilities.

### Digital Inclusion

£5,000 was awarded to the Precious Time Consortium. Funding went towards providing laptops and running costs for The Silver Surfers, a group training older people and people with learning difficulties in how to use laptops, ipads and smartphones, increasing skills and reducing digital exclusion.





## Bath & North East Somerset

### Rural areas

The Hive is a new community centre in Peasedown St John, in the Somer Valley. The centre is close to the primary school and local social housing and hosts a community café run by the charity SWALLOW, a post office, library and more. The Hive received a grant of £4,435 to create an indoor children’s play area by the café. This grant has provided the only fully accessible play space for 5 miles and a crucial resource for local families without access to a car.

### Fuel poverty

Older people are more likely to face fuel poverty, with significant consequences for their health. A grant of £2,000 from our Surviving Winter programme meant the Centre for Sustainable Energy could offer emergency fuel payments to 35 vulnerable older people in Bath & North East Somerset who couldn’t otherwise afford to heat their homes.



## Bristol

### Food insecurity

Square Food Foundation is an award-winning cookery school and community kitchen. Delivering courses from their community kitchen in Knowle West and through outreach programmes, they aim to reduce hunger and improve local health and wellbeing. A £29,464 grant supported improvements to their kitchen, and a project delayed by covid worked with parents, teachers and pupils at Oasis Academy Connaught to increase skills and good food both at school and at home.

### Equity, diversity & inclusion

Bristol Disability Equality Commission (BDEC) was established in 2021 in recognition of the inequalities faced by disabled people. BDEC aims to make Bristol a more equal place to live, with more choice and control for disabled people. A grant of £10,000 over 2 years is supporting disabled people’s organisations to participate in the commission’s work by covering access costs such as accessible venue hire.





# Jubilee celebrations

## Memories for a lifetime

With the loss of Her Majesty Queen Elizabeth II this year, we remember the joyful celebration of her Platinum Jubilee in June 2022. Thanks to funding from the Arts Council England's Let's Create Jubilee Fund, we were able to award 11 groups a total of £79,498 for creative celebrations in our area.

A 'Portraits of Care' project was awarded £9,847 for Bristol Care Homes residents to work with the Royal Photographic Society to capture self-portraits revealing meaningful moments in their lives and recollections of the Queen's reign.

Zion, based in Bishopsworth, South Bristol received £4,870 for a museum-style display and events during the week of the Jubilee, including crafts, music and a workshop on changing local history attended by 750 residents.

Carers' Centre B&NES celebrated the Jubilee through a special community creativity day at the Holburne Museum in Bath for carers and their families. They were joined by families from Southside Family Project which supports people from disadvantaged communities. Families were given food and free access to the Holburne to enjoy the exhibitions. For many it was their first chance to visit. The £10,000 benefited 285 people and helped families and staff from each organisation to forge new partnerships and networks.

“

It felt like the community were brought together for a week of celebration and the different events got people in a positive mood which was especially important after a tough couple of years.

”

– Zion





# 35 years of deep rooted change

**35 years ago a new charity came into being, one that began life as the Greater Bristol Trust and today is known across the West of England as Quartet Community Foundation. Its founding vision was of an endowment fund that could grow with time to enable it to take a long-term view of community investment. The instinct proved sound and Quartet is now one of the largest of the 47 community foundations that span the UK.**

Our early years were characterised by slow but steady growth and a focus on developing the infrastructure for us to deliver our core activities. This patient and diligent approach on both the philanthropy and grant-making side has paid dividends. Today, we're in a strong position to respond to the growing needs of our communities, demonstrated most visibly by our ability to act quickly when the Covid pandemic struck. Our trusted relationships and knowledge of local community organisations has also positioned us well in gearing up for the emerging cost of living crisis.

We are champions of local philanthropy, nurturing relationships with growing numbers of generous donors – we have some 300 fund holders who trust us to manage and advise them on their charitable giving. We have built close relationships with our communities, listening to the groups working on the ground, shining a light on key issues, and directing support where it can have most impact. We trust the knowledge and insights of local charities and community sector groups and, in turn, they trust us to act in an honest and effective way. This collaborative approach means we have laid down deep roots. We may not have been able to predict the future 35 years ago but we now have the tools and resources needed to address its most pressing challenges.

Thank you to all our fund holders and donors, as well as to the countless individuals and companies who have supported us along the way and believed in this vision.

“

**Quartet is very well connected... they've had boots on the ground for many, many years. I think they've got a good understanding of the issues and the complexity.** — fund holder

”





# 35 years of Quartet

**1986**

The Greater Bristol Trust is launched as one of the first community foundations in the UK. Our first grants are awarded to ACTA and Home-Start, both organisations are still going strong today.

**1994**

We are renamed The Greater Bristol Foundation.

**1997**

We celebrate reaching our first £1m in grants distributed over our first ten years.

**2002**

For the first time, we distribute £1m in grants in a single year.

**2005**

We are renamed Quartet Community Foundation to represent the four areas we now serve.

**2007**

Steady growth leads to £15m in grants distributed since 1986. Our endowment reaches £10m.

**1988**

We start to build our endowment fund to provide long-term support for local charities. Our first named fund is The Harry Crook Foundation fund.

**1996**

The High Sheriff of Bristol establishes BYCA, an annual campaign supporting positive activities for children in Bristol, still running today.

**1999**

Thanks to the Needham Cooper Charitable Trust and The National Lottery, we buy Royal Oak House, to create a new hub for local charitable organisations and a new home for Quartet.

**2004**

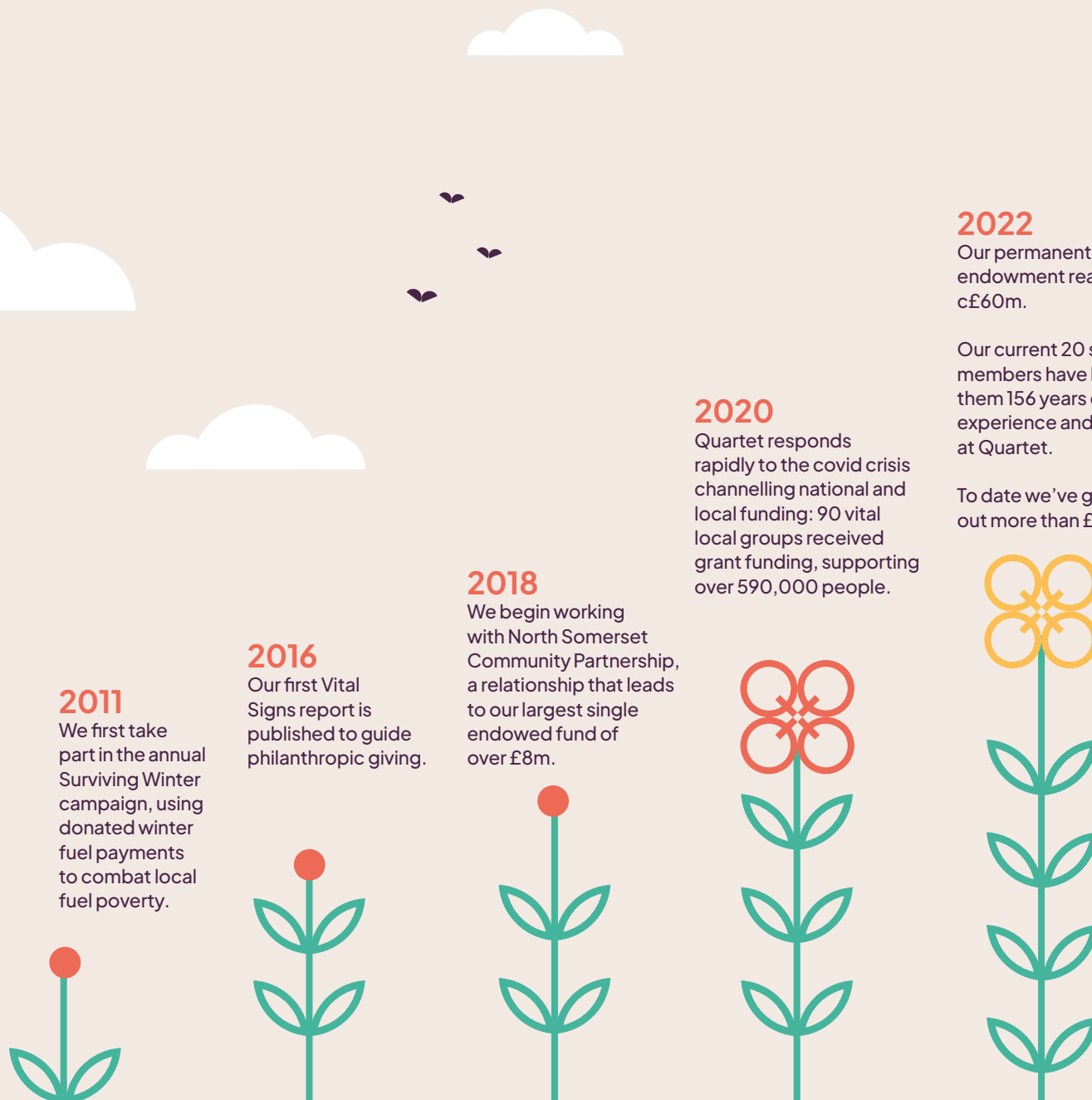
We set up a satellite office in Bath.

**2006**

We celebrate our 100th named fund, the Bath Half Marathon Fund.

**2008**

A UK-wide grassroots matched funding challenge gives a £3m boost to our endowment.



### 2011

We first take part in the annual Surviving Winter campaign, using donated winter fuel payments to combat local fuel poverty.

### 2016

Our first Vital Signs report is published to guide philanthropic giving.

### 2018

We begin working with North Somerset Community Partnership, a relationship that leads to our largest single endowed fund of over £8m.

### 2020

Quartet responds rapidly to the covid crisis channelling national and local funding: 90 vital local groups received grant funding, supporting over 590,000 people.

### 2022

Our permanent endowment reaches c£60m.

Our current 20 staff members have between them 156 years of experience and service at Quartet.

To date we've given out more than £66.3m.

### 2012

We run the Community Games Fund, providing local communities with sporting opportunities to celebrate the Olympics.

### 2017

The Penny Johnstone Award, given annually to a project with an outstanding grant report, is established in memory of Penny Johnstone, our founder director.

### 2019

We launch the Lasting Legacy Match Challenge with a legacy kindly left to Quartet, bringing us £3m in new endowment.

### 2021

We distribute record grant funding of over £5.2m.



# Looking to the future

Early in 2022 we spent time looking out across the next decade. We explored our hopes and ambitions for Quartet and agreed our top priorities.

We also developed some important principles which have emerged as central to our approach and which will inform our planning, decision making and monitoring: Equity, Diversity & Inclusion and Environmental Sustainability and Climate Action.

Our Endowment Fund is made up of funds entrusted to us by individuals, families, organisations and others over 35 years. We invest it wisely, using the income generated each year for grant-making. No-one knows what is around the corner so, by protecting the capital, we have a permanent source of support for our communities not just today, but far into the future.

## We're here for the long term

Our Endowment Fund is the foundation stone on which all our work has been built. It signifies our ambition that philanthropy will meet the needs of local communities far beyond our own lifetimes and avoid the short-termism that can inhibit real change.

### Looking ahead, we will:

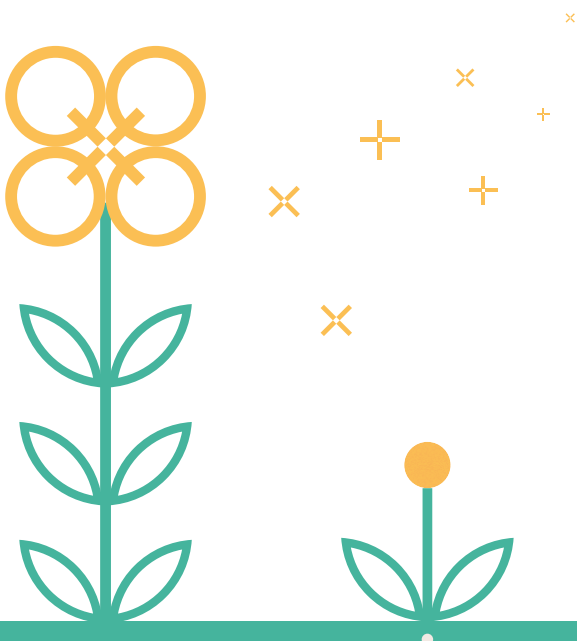
- Grow this fund to best support communities in the short and long term
- Explore ways to increase investment returns to expand our grant-making
- Deepen engagement with existing supporters while promoting endowment to a new, more diverse generation of supporters.

## We're here to help you make a difference

The generosity of local philanthropists powers all our work and we provide a high quality service for our fund holders. As well as financial donations, people can give of their time, talents, knowledge and contacts.

### Looking ahead, we will:

- Broaden our offer to become relevant to a new generation of generous givers: people who may not view themselves as philanthropists
- Foster deeper relationships with businesses as they look to integrate social values and purpose into their work
- Expand our pro bono service across our region, deepening the support we can offer to community organisations.





## We're here for our communities

A thriving community and voluntary sector is fundamental to the fabric of our society and to all people having the chance to fulfil their potential. In distributing grants, we work in a fair and accessible way to support local charities and community groups to meet the needs of their communities.

### Looking ahead, we will:

- Distribute at least £5m every year through our grant-making
- Work collaboratively, aligning and targeting the resources we have for best effect. Turn the conversation away from competitive grant-making in favour of a more equitable approach
- Partner with funders, community sector leaders and organisations around key themes, taking a strategic approach to our grant-making.

## We're here to listen and to add our voice

Our community philanthropy approach means we have an important role to play in connecting people, sharing ideas and helping to create common agendas for positive change. This approach requires strong networks, expert knowledge and open collaboration.

### Looking ahead, we will:

- Shine a light on the most pressing issues of the day and play a convening role in developing collaborative and strategic approaches to addressing them

- Develop the culture and processes of a learning organisation: always listening, reflecting and adjusting in order to improve
- Publish regular social needs reports, ensuring our publications will be useful to and resonate with a wide range of audiences.

## Equity, Diversity & Inclusion

We aspire to be more equitable, diverse and inclusive in all our activities. We believe in fairness and have always sought to assist people who are most disadvantaged in our region, drawing upon partners and experts on our journey.

## Environmental sustainability & climate action

We want to help secure a better and more sustainable future for all and believe that a place-based model is an important way of achieving this. We will strive to reach Net Zero by 2030, focusing on the areas where we can control outcomes, specifically around our responsible investment policy.





# Cost of living crisis

## Work with us to take urgent action

**The spiralling cost of living crisis shows no signs of slowing. Like the pandemic before it, we know that everyone is being affected, but not equally. Many of the people already struggling on the lowest incomes and with additional needs are being disproportionately affected.**

**The gulf between many people's income and the cost of the basics in life is simply unattainable. No matter how many compromises, how many cuts people try to make to their essential living costs, they cannot bridge this gap.**

At Quartet we have already seen a rise in demand for the vital support that our local community organisations and charities provide. Not only are more people coming through their doors, but they have more complex problems to deal with, such as financial hardship and debt, rising energy costs and the lack of affordable food. But the rising cost of living is also hitting these same organisations hard as they try to meet this increase in demand but with less capacity to do so.

### So what are we doing at Quartet?

During summer 2022 we began, with the support of our fund holders, to quickly distribute grants to front-line debt advice organisations and those supporting vulnerable older people throughout our area. In September, we began the planning to extend this same support to groups working with people in food poverty and those helping people with their energy and fuel costs.

We have already begun working closely with Bristol One City to fund a network of community hubs and community activity throughout Bristol, where local people and communities can mobilise support, advice and practical help ahead of winter. Funding, which we began to distribute in September, has also been allocated to networks of well-being and advice organisations.

Our community groups and charities are on the front line of this work but they need support too. This is where we urgently need your help.





# A time to act

Later in this report you will see four pages of names: these are the individuals, families and organisations who have already set up funds with Quartet.

The funds vary in scale and are tailored to focus on the particular interests of the fund holder, but they share one thing in common: they are distributed in a way that really does make all the difference to local charities and community organisations across the West of England.

We have many generous fund holders but the scale of issues facing our communities and, in particular, the cost of living crisis, means that we need many more. The effects of this current crisis come off the back of a global pandemic and will be felt for many years to come, deepening the inequalities and problems that already exist. And then there is the climate crisis, already affecting local lives across our neighbourhoods and intensifying each year.

Many people set up endowment funds that they help to steer during their lifetimes, trusting Quartet to then observe their wishes beyond this time. Some set up family funds and use this as a way of sharing their commitment to giving with those closest to them and to future generations. Other people want to draw down on their fund more quickly, distributing their funds over a shorter period, perhaps two to five years.

**The more funds we hold for our area, the greater our resources and the more we can do together.**

We hope this report will have inspired you to deepen your relationship with Quartet or to take the first step towards supporting local communities through Quartet. We firmly believe that anyone can be a philanthropist and we want the experience of supporting communities to be simple and rewarding – so here are three things you can do today:

## Already a fund holder?

Your generosity is greatly valued but you may feel that this is the moment to add to your fund. The best way of doing this is to get in touch with either Ronnie Brown or a member of our Philanthropy Team.

It would help us hugely too if you could talk to friends or colleagues and inspire them to follow your lead and to set up a fund. We're very happy to have an initial exploratory conversation with them.

## Could you be our next fund holder?

If you're moved by what you've read and feel there's never been a more compelling reason to set up a fund, please contact either Suzanne Rolt or Ronnie Brown. There's no obligation, but by talking through the options you can see if this might be something for you to do either today or further into the future. We'd love to hear from you.

## Donate to our Cost of Living Fund

If you want to act immediately with a donation to this new fund that has been set up specifically to counter the impact of the cost of living crisis in your local area, please go to our website at: [quartetcf.org.uk/donate/](https://quartetcf.org.uk/donate/)



# Climate resilience and nature recovery

**Our climate is in crisis and the impact of rapid and disruptive change is at the top of the issues facing our area. We recognise the challenges but know we must accelerate our work to help cushion the impact on future generations.**

Our updated investment policy reflects our responsibility to do what we can to limit climate change, supporting the ambition for carbon neutrality by 2030 that is held by each of the local authority areas we serve.

In signing the Funder Commitment on Climate Change, Quartet pledged to increase support for groups in this field, and to support more community organisations to engage with the likely impact of climate change on their work and the people they serve. In 2021 we published our Vital Signs report 'Climate and Communities' which set out the urgent need for us all to do more. We calculated that over the preceding 10 years, approximately 5% of our funding went towards environment-related projects.

Since then, we've run five dedicated grant programmes in this area and worked with our fund holders to raise awareness and support for climate and nature-related work. For the period under review, our grant-making in this area has increased to 7% of our overall funding (£485,052). This is a really promising increase in a short space of time, and we know that the projects supported will have had important benefits for local communities, for people facing disadvantage and for local wildlife.

## 63%

of our fund holders agreed philanthropy should be increasing support for climate change resilience and nature recovery\*



Scan the QR code to keep up to date with our commitments and progress.



# Giving generously together



A named fund with us is a rewarding and effective way of giving to the causes that matter to you most. Our flexibility, coupled with our knowledge and expertise, means that your fund will achieve your charitable aims and maximize the impact of your giving, both now and in the future.

During the year, 18 new funds were established, bringing the number of separate funds we now manage to 360. Each fund has a specific purpose that reflects the fund holder's priorities. Listed in the pages that follow are the funds we manage, demonstrating the strength of the local philanthropy that powers everything we do. We are so grateful for all the support we receive - thank you.

If you would like to do more with your giving by increasing or establishing a fund with us, please contact us to discuss your giving options.



**I think they're right for anyone who has some money they'd like to put to a good cause. Quartet can channel that better than somebody trying to do it on their own.**



— Celtic Connection Fund, fund holders

We received donations of

# £6.4m

in 2021/22



**The impact thing is an important factor. £10k locally can make a big impact for a small local charity, and produces direct results.**



— Iain Boyd, donor





# Our funds

## Revenue funds

### Over £100,000

- Bristol City Council and Ecological Emergency Fund
- Bristol City Council Health and Wellbeing Fund
- Bristol City Council Youth Sector Support Fund
- Bristol Community Health Fund
- Bristol Youth Development Fund
- The Grove Fund
- Mohn Westlake Foundation Fund
- National Lottery Community Fund
- Osborne Clarke Charitable Fund
- Quartet Recovery Fund
- Pople Charitable Trust Revenue Fund
- Watson Family Revenue Fund
- Wessex Water Community Fund
- Wessex Water Environment Fund

### £50,000 – £99,999

- Arts Council England Jubilee Fund
- Commissioner's Crime Prevention Fund
- Direct Line Group Community Fund
- Pargiter Trust Fund
- Wessex Water (Donor Directed) Fund

### £20,000 – £49,999

- R W Barnes Bursary Fund
- Bath & West Community Energy Fund
- Rob Camm Charitable Revenue Fund
- Ella Rose Fund
- Farscape Family Fund
- GWR Community Charitable Fund
- High Sheriff's Fund
- Megawatt Community Energy Fund
- Red Trousers Fund
- Wesleyan Foundation

### Up to £20,000

- ALF Revenue Fund
- Bath and North East Somerset Community Wellness Fund
- Bath Half Marathon Fund
- Biscuit Fund
- Peggy Blunt Memorial Fund
- Bristol City Funds
- Burges Salmon Charitable Trust Fund
- Delegated Services Fund
- Education for Refugees Fund
- Frances Goodchild Foundation
- Funding the Future Fund Bristol
- Future Publishing Grassroots Fund
- HAS Trust Charitable Revenue Fund
- Dan Hickey Fund
- Hollingdale Fund
- Lord Lieutenant for Bristol's Fund
- Mayor's Fund for Bristol
- North Somerset Realising Potential Community Transport Fund
- Raj K Soni Legacy Fund
- Rogerson Fund
- St James Trust
- Surviving Winter Appeal
- TAP for Bristol Fund
- Te Puke Fund





## Endowment funds

### £5m and above

- Bank of Ireland UK Community Giving Fund
- North Somerset Community Partnership Fund

### £1m – £4.9m

- Arnos Vale Cemetery Fund
- Bank of Ireland UK/Bristol & West '97 Fund
- Barbara & Winifred's Fund
- RW Barnes Bursary Fund
- Bristol Community Health Bursary Fund
- Celtic Connection Fund
- Eversea Community First Fund
- Young Bristol Challenge Fund

### £500,000 – £999,999

- AXA Fund
- Biddle Trust Fund
- The Bristol Port Company Fund
- Joan & Walter Hawkins Fund
- Kenny Family Community First Fund
- Betty & Miles Parsons Grassroots Fund
- John Pontin Trust
- Pople Charitable Trust
- Tredwin & Pennington Family Fund
- Wormhole Fund

### £250,000 – £499,999

- Bath Half Marathon Fund
- Bristol Bordeaux Community First Fund
- J & M Britton Charitable Trust
- Cowslip Green Fund
- The Harry Crook Foundation Fund
- Denman Charitable Trust Fund
- Eastside Neighbourhood Endowment Fund
- HAS Trust Endowment Fund
- Audrey Heckels Fund
- Brian and Katie Lovering Family Fund
- Lloyd Robinson Family Fund
- Needham Cooper Charitable Trust
- Rolls-Royce Fund

- Sherwood Family Fund
- Society of Merchant Venturers Fund
- Stoke Park Group Friends' Fund
- Thrings Solicitors Fund
- Upper Horfield Neighbourhood Grassroots Fund
- Watson Family Endowment Fund
- Marjorie Edwina Whitlock Fund

### £100,000 – £249,999

- Ambassadors Fund
- Anderson Fund
- Ansty Fund
- Bank of Ireland UK/Bristol & West Endowment Fund
- John Bretten Grassroots Memorial Fund
- Bridge Foundation Fund
- Bridging Fund Community First Fund
- Bristol Association for Care & Resettlement of Offenders
- Bristol Community & Voluntary Sector Fund
- Basil Brown Fund
- Chapman Family Fund
- High Sherrif's Fund
- Hugh and Judith Champion Charitable Fund
- The Margaret Cooper Fund
- Jerry Cowhig Community First Fund
- Ben Durston Community First Fund
- Crazy Diamond Fund
- Dunton Fund
- Andrew Fletcher Grassroots Fund
- Fittleworth Grassroots Fund
- Fund for Young People
- Hewlett Packard Bristol Fund
- Mark Hudson Fund
- Into the Arts Fund
- Mr and Mrs Richard Johnson Fund
- Kitale Community First Fund
- John Laing Fund
- Laycock Family Grassroots Fund
- Learning & Skills Council West of England Fund
- McGreevy Fund



- Medlock Charitable Trust Community First Fund
- Mercers Company Fund
- North Somerset Realising Potential Charitable Fund
- Osborne Clarke Endowment Fund
- Sheila Pollard Grassroots Fund
- Rotary Club of Weston-super-Mare (including Claude Champion)
- Sharp Family Fund
- John Spielman Fund
- St Mary's Tyndalls Park Trust Fund
- Chris & Diana Sweeting Fund
- Tidmarsh Fund
- TLT Solicitors Fund
- University of the West of England Vice Chancellor's Fund
- Verdon-Smith Family Charitable Trust
- Wilde Family Fund

### £50,000 – £99,999

- 25th Anniversary Fund Community First Fund
- A&J Fund
- Adrian Andrews Fund
- Arden Fund
- Bellevue Community First Fund
- Bristol Airport Grassroots Fund
- Bristol City Council Community Safety & Environment Fund
- Bristol Water Fund
- Anthony & Gabrielle Brown Fund
- Churngold Environment Fund
- Clerical Medical Investment Group Fund
- Courage Brewery Fund
- Douglas Family Charitable Fund
- Florence Denning Fund
- Dulverton Fund
- Durie Family Fund
- Elizabeth Shaw Fund
- Exploratory Fund
- Finn Family Fund
- Harptree Fund
- Harvest Charitable Fund
- Alfred Hill Fund
- JP Morgan Fund for Education
- KPMG Fund
- Lee Family Fund

- Mayden Foundation Charitable Fund
- Nisbets in the Community Fund
- Red Trouser Quay Environment Fund
- Peter Rilett Fund
- E S & A Robinson Family Fund
- Ian and Sarah Robinson Fund
- Rose Bowl Fund
- Shakespeare at the Tobacco Factory Fund
- Sheridan Family Fund
- Tim Stevenson Fund
- Diane & Murray Stewart Fund
- Julian & Lindsay Telling Fund
- University of the West of England Endowment Fund
- Wards Solicitors Centenary Fund
- Western Power Distribution Community Fund
- Sir John Wills Charitable Trust
- Withy King Endowment Fund
- Yates Family Charitable Fund
- Youngwood Fund
- Zair Family Fund

### £25,000 – £49,999

- Andrew Addicott Community First Fund
- Armeno Fund
- Roger & Affra Baird Fund
- Charles Barcroft Fund
- Dean Beesley Family Fund
- Bramble Fund
- Bristol Junior Chamber of Commerce Fund
- Bristol Young Professionals Fund
- Burke Family Fund
- Business West Endowment Fund
- Cadbury Fund
- Chairman's Fund
- Chantry Fund
- Dr Catherine Chapman, née Chambers Fund
- Churngold Quay Environment Fund
- Claisse Family Fund
- Clarke Willmott Grassroots Fund
- Bob Clements Education Grassroots Fund
- Corixa Fund
- Cullum Family Fund
- Cussen Family Fund
- George Dibdin Fund
- Dixon Family Fund
- J R Dunn Fund



- Ebb Fund
- Egginton Family Fund
- Farleigh Plain Community First Fund
- Gollop Cripps Family Fund
- Harbil Fund
- Harveys of Bristol Fund
- Hughes Family Fund
- Johnstone Family Fund
- Kaye Family Grassroots Fund
- Lalonde Fund
- Michael Lutley Fund
- Geoff & Jackie Matthews Fund
- Marlow Family Fund
- Masters Family Fund
- Mosaic Management Consultancy Fund
- Helen Moss Grassroots Fund
- Moss Family Fund
- Neal Family Fund
- David & Julia Norton Fund
- Pamela's Grassroots Fund
- Pendlebury/Tucker Community First Fund
- Redcliffe Homes Fund
- Tim & Liz Ross Fund
- Tips & Wrinkles Fund
- Safestore Charitable Fund
- Saffery Champness Fund
- Steel Charitable Trust
- Stobart Family Fund
- Stride Treglown Fund
- The Serchio Fund
- The YP2 Fund
- Andrew Thornhill Fund
- Top Birds Fund
- Unilever HPC Export Fund
- Yorkshire Pudding Fund

### Up to £25,000

- Aird Family Community First Fund
- Alastair Sawday Publishing Grassroots Fund
- Allied Domecq Fund
- Alyson Chapman Fund
- August 5th Fund
- Aviva Fund
- Awdry Fund
- AWW Fund
- B&NES Fund
- Bath Percent Club

- BDO LLP Fund
- Bragg Family Fund
- Bristol Social Responsibility Trust Fund
- Montpelier High School Fund
- Corrigan Associates Fund
- Sue & John Cottrell Fund
- Cryfield Community First Fund
- Eupheus Fund
- Foster Family Community First Fund
- Freedom Fund
- Future Publishing Fund
- Roger Guck Bursary Fund
- Henacre Charitable Fund
- Hemming Family Fund
- Housing & Homelessness Community Fund
- Idris Community First Fund
- The Internal Comms Team Fund
- Janet Parsons Orchard Fund
- Lions of Bath Grassroots Fund
- Mayor's Fund for Bristol
- McArthur Fund
- Mulberry Community First Fund
- North Somerset Fund
- Parklyn Fund
- Pattersons Fund
- Richardson Swift Grassroots Fund
- Rushmoor Grassroots Fund
- Jennifer Skellett Fund
- Mary Smallwood Grassroots Fund
- Matthew Smallwood Grassroots Fund
- Paul & Amanda Smallwood  
Grassroots Fund
- Alan Stevenson Family Fund
- Storvik Family Fund
- Stephen & Sally Trinder Grassroots Fund
- Tolchard Family Fund
- Wesport Grassroots Legacy Fund
- Willin Community First Fund
- Whitaker-Sharp Fund
- Whitewood Family Fund
- Zetor Fund

Thank you to our 5 additional anonymous fund holders



# ProHelp: Doing good (with your) business

We value the unique abilities of the thousands of charities and voluntary organisations working across the West of England. We do all we can to provide support through our grant-making and collaborations. Sometimes though, they need something more to ensure they can deliver their vital services. This is where our pro bono brokerage service comes in: ProHelp connects them with local businesses who are willing to share their skills, professional advice and services in a highly tailored manner. Launched in Bristol, this service now runs right across our region and is growing in scale and impact.

There is real strength in these pro bono partnerships, offering anything from legal, financial, business, HR, IT and professional building services through to creative and communications support.

- Over 100 charities and community organisations matched with professional business support
- Over £120k worth of pro bono support delivered
- 100s of hours of skilled volunteering delivered by Bristol businesses



A big thank you for organising and supporting our request for legal support and matching us up with Osborne Clarke. We could not have asked for a better partner. You provided us with all of the legal advice and support we needed and drew in other specialist colleagues when we had one-off questions.



— Friends of Jubilee Pool

### HR support for Clean Up Bristol Harbour

“We were delighted to receive the support from an HR professional. Alison reviewed our draft company policies incisively and offered helpful practical advice”.

**John Peters-Coleman,**  
Clean Up Bristol Harbour



“This has been a perfect way to give something back to my community in Bristol”.

**Alison Cooper,** HR Director

### Interior designs for Youth Moves’ new home at The Park Centre

“Elena at Cabrera Studio really listened to the brief and came up with great designs that really helped us to visualise the space and engage with funders and we’ve already raised £20,000 towards fit out costs”.

**Alistair Dale,** CEO,  
Youth Moves

“It was great working with Alistair and meeting the amazing people at Youth Moves. I’ve learned about the wonderful work they do, their mission and vision, and understood what their needs and expectations were to be able to help them visualize and make the most of their new space at The Park”.

**Elena,** Cabrera Studio



To find out more, contact John Stienlet at [john.stienlet@quartetcf.org.uk](mailto:john.stienlet@quartetcf.org.uk)





# Remembering...

**We were very sad to hear of the passing of four of our most engaged and valued fund holders this year: Joan Hawkins, Tony Kenny, Nicole Sherwood and Sally Trinder. They worked hand in hand with us during their lifetimes and we will continue to support communities in their name far into the future.**

## **A tribute to Joan Hawkins**

Joan was one of our earliest and most consistent supporters, setting up a permanent fund in the memory of her late husband, Walter, in 1992. Walter was the former Chairman and Managing Director of both the Bristol Evening Post and the Bristol United Press.

Joan wanted to share her and Walter’s passion for the arts through his fund, going on to support more than 80 organisations since the fund’s establishment.

“Without the community foundation I would still have supported local charities, but my giving would have been piecemeal and I would have missed all those groups doing great work which I wouldn’t have known about or been able to reach”, Joan said in one of our regular conversations.

Years later, Joan also created a fund in her own name to support a broader range of community initiatives. These have included a community gardening project at Trinity Community Centre, a support project for women street sex-workers run by One25 and most recently a choral project for primary school children in Bath.

Joan always talked with her daughter Veronica, now a retired teacher, about her charitable giving and over the years, she invited Veronica

to become more involved with the work with Quartet. Veronica attended Quartet events for about 12 years before gradually taking over stewarding the fund on her mother’s behalf. This involvement was recently formalised by putting in place succession planning arrangements for the funds.

Veronica explains, “I know the kind of projects my mother enjoyed supporting and I will continue to fund things she would have wanted to be involved with. We shared many of the same interests, including arts and local community work and it is a great honour that she has passed on the ability to do this to me”. And as Joan said at the time “These funds are intended to be here, supporting local projects, even when all of us are no longer around”.

We are grateful for Joan’s longstanding support and look forward to continuing her legacy with Veronica.





# Thank you

We owe an immense debt of gratitude to the many people whose continued dedication and commitment to Quartet continue to underscore all our work.

Our Board, staff and honorary members are listed below but many others, not least committee and panel members, are so important to our work. All these can be viewed on our website (please use the QR code below to link to these).



Just as important are the numerous charities, community and voluntary groups who inspire us every day through their own commitment, skills and expertise, and their care and support of the hundreds of thousands of people who live in our communities. We feel privileged to work in partnership with these groups and to have such trusted relationships.

## Our grant panels

- Arts Council England Let's Create Jubilee Fund
- Bank of Ireland Community Fund
- Bath & West Community Energy Fund
- Bath Half Marathon Fund
- BCC Climate and Ecological Emergency Grant
- BCH Health & Wellbeing panel
- Bristol City Funds City Lab panel
- Bristol Community Health Grant panel
- Cabot Circus Community Support Scheme panel
- Wessex Water Foundation Environment Fund
- North Somerset Community Partnership Grant panel
- Resilience Programme
- Wessex Water Community Fund

## Patrons

- Peaches Golding OBE
- Annie Maw

## Trustees

- Sue Mounstevens OBE (Chair)
- Jonathon Baker
- Sue Blatchford
- Matt Crossman
- Oliver Delany OBE
- Caroline Hagen
- Chris Johnson
- Raj Kakar-Clayton
- Matthew Lee
- Nick Lee
- Kristen Pye
- Junior Sheikh
- Ben Silvey
- Jo Turner

## President

- Trevor Smallwood OBE DL

## Vice Presidents

- Will Bee
- Chris Curling
- Geoff Matthews
- Mary Prior CVO MBE
- Professor Murray Stewart
- Sir James Tidmarsh KCVO MBE JP
- Lady Wills

## Senior Management Team

- Suzanne Rolt (CEO)
- Ronnie Brown
- Sarah Crispin
- Diane Kent

## Philanthropy, Programmes & Learning

- Luke Boulton
- Angela Emms
- Lucy Gilbert
- Leiza McLeod
- Laura Murgatroyd
- Julie Newman
- Andrew O'Sullivan
- Sabita Ravi
- John Stienlet
- Emma Travis-Neale
- David Triggles-Wells
- Claire Wynne Hughes

## Finance

- Tracey Hill
- Cathy Swift

## Operations

- Charlene Lawrence
- Stephen Robins



Investments that sustain will  
shape our cities, life expectancies  
and the natural world around us.

Get in touch to find out how your investments  
can align with your charity's objectives.

Let's work together  
for a better world

[ccla.co.uk](https://ccla.co.uk)

Image courtesy of Koestler Arts. Favelas, HMP Wakefield.  
CCLA Investment Management Limited is authorised  
and regulated by the Financial Conduct Authority.

**CCLA**

GOOD INVESTMENT

Tell us where  
you need to go.  
We'll help you  
get there.

Rathbones provides individual investment and wealth management services for private clients, charities, trustees and professional partners. We have been trusted for generations to manage and preserve our clients' wealth.

For further information, please contact  
**Natalie Yapp** on 020 7399 0128  
or email [natalie.yapp@rathbones.com](mailto:natalie.yapp@rathbones.com)



**Rathbones**  
Look forward

[rathbones.com](https://www.rathbones.com)

[@RathbonesGroup](https://twitter.com/RathbonesGroup)

[Rathbones Group Plc](https://www.linkedin.com/company/rathbones-group-plc)

[@Rathbonesplc](https://www.instagram.com/Rathbonesplc)

The value of investments and income arising from them may fall as well as rise and you might get back less than you originally invested.

Rathbone Investment Management Limited is authorised by the Prudential Regulation Authority and regulated by the Financial Conduct Authority and the Prudential Regulation Authority.

# Here today, here tomorrow

## Leave your community stronger

Leaving a legacy to Quartet Community Foundation is a simple way for you to leave money to benefit the local community for generations to come. You can create something of real and lasting value to local people.

How do we know this? Making a gift in your Will of **£100,000** would enable you to set up a fund with Quartet. This fund could then give out grants of more than **£250,000** during the lifetime of a child born today.

If you'd like to find out more, please go to our website page where you'll find further information. Or speak to Claire Wynne Hughes or Angela Emms on **01225 420 300**.

Thank you.

**Suzanne Rolt, CEO**  
suzanne.rolt@quartetcf.org.uk  
0117 989 7702

**Ronnie Brown, Philanthropy Director**  
ronnie.brown@quartetcf.org.uk  
0117 989 7705

**Philanthropy Team**  
philanthropy@quartetcf.org.uk  
0117 989 7700

